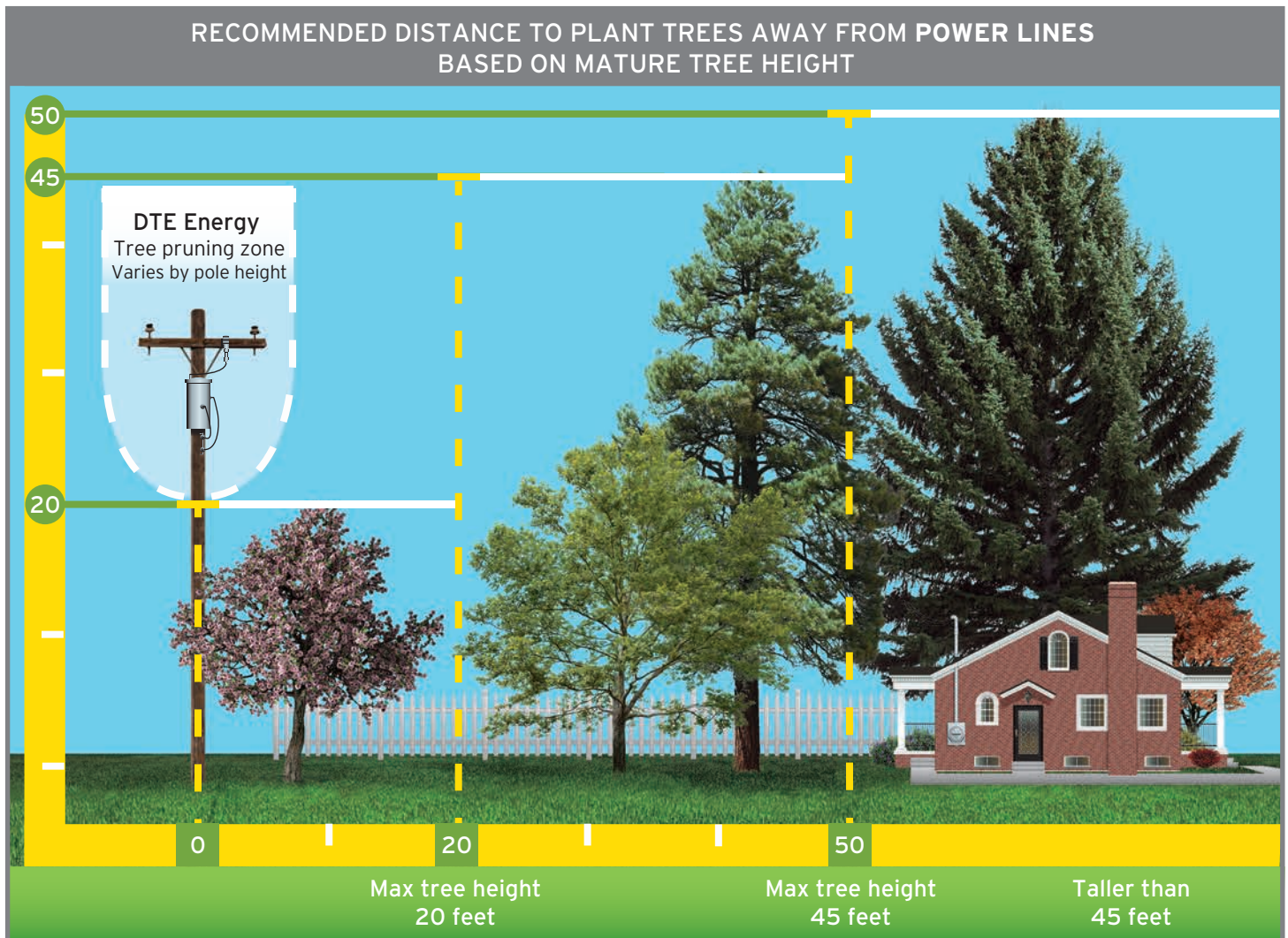


# PLANT THE RIGHT TREE IN THE RIGHT PLACE

The secret to having both reliable electricity and strong, beautiful trees is to plant only power line friendly low-growing trees near overhead power lines.



Directly under power lines to 20 feet away, maximum height 20 feet. From 20 to 50 feet away, maximum height 45 feet. More than 50 feet away, no maximum height.

**WARNING:** DO NOT ATTEMPT TO TRIM TREES NEAR POWER LINES

