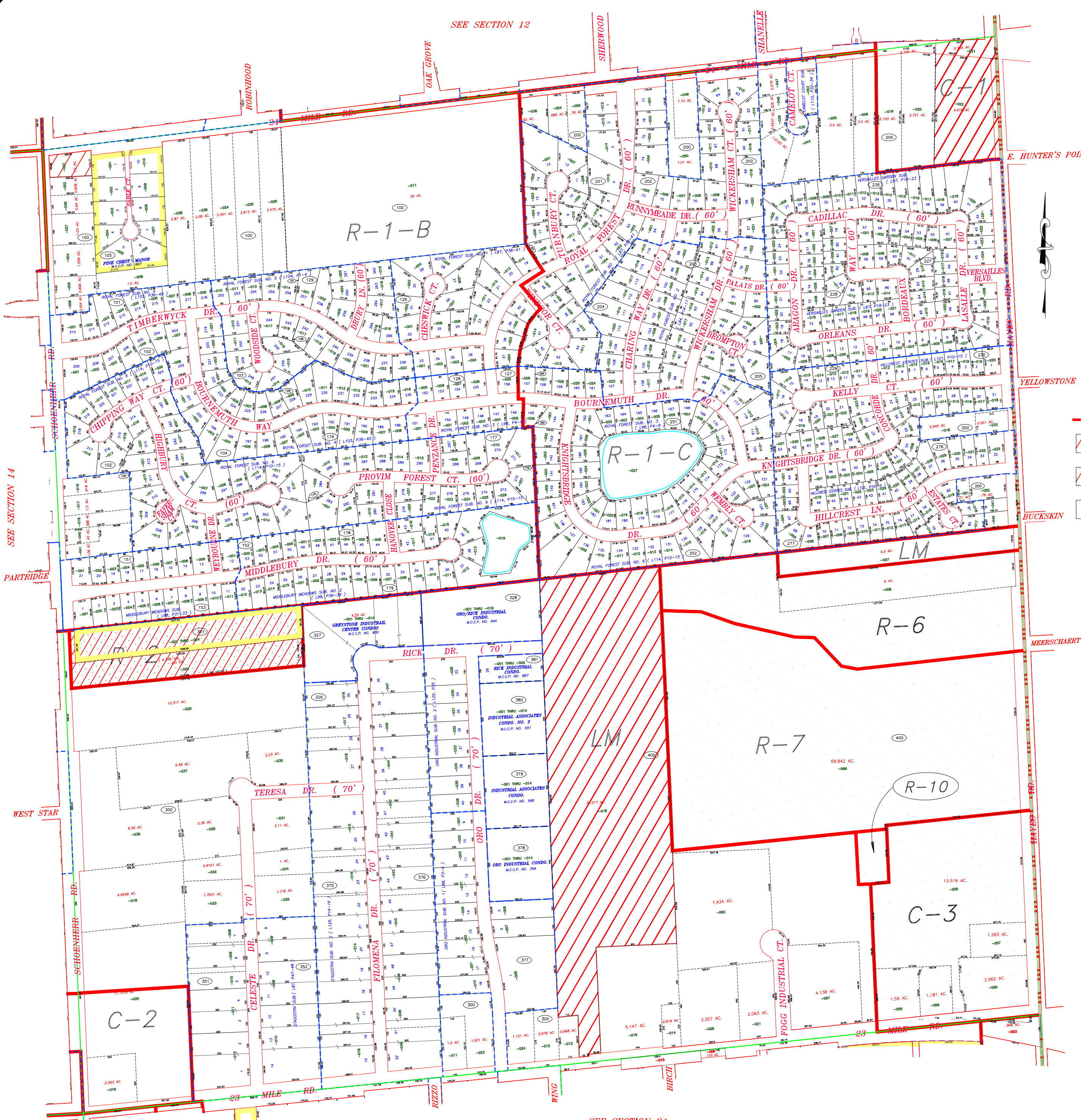


SEE SECTION 12



ZONING LEGEND

- R-1 ONE FAMILY RESIDENTIAL
- R-1-A ONE FAMILY RESIDENTIAL
- R-1-B ONE FAMILY RESIDENTIAL
- R-1-C ONE FAMILY RESIDENTIAL
- R-2 ONE FAMILY RESIDENTIAL
- R-3-12 MULTI FAMILY, LOW RISE
- HMR HIGH & MID RISE
- MHP MOBILE HOME PARK
- O-1 PROFESSIONAL OFFICE
- O-2 SERVICE OFFICE
- C-1 RETAIL BUSINESS, LOCAL
- C-2 LINEAR RETAIL BUSINESS
- C-3 SHOPPING CENTER BUSINESS
- C-4 GENERAL BUSINESS
- C-5 MULTI - USE
- C-6 SHELBY CENTER
- I-R INDUSTRIAL RESEARCH
- LM LIGHT MANUFACTURING
- HM HEAVY MANUFACTURING
- F-1 FLOODPLAIN
- REC RECREATION

- T-1 TRANSITIONAL
- CONSENT JUDGMENT OR DEED RESTRICTION
- CONDITIONAL REZONING
- PUD

SEE SECTION 14

SEE SECTION 24

**PARCEL INFORMATION CURRENT THROUGH JULY, 2016

REVISIONS / UPDATES	DATE	REMARKS	DATE	REMARKS
	12-20-2010	ADDED ZONING		
	12-20-2011	PARCEL SPLIT / CORRECTIONS		
	02-27-2012	STANLEY GROT		
	01-18-2016	2015 ZONING CHG		
	03-2017	ZONING UPDATES		

FAZAL KHAN & ASSOCIATES, INC.
 CIVIL ENGINEERS & LAND SURVEYORS
 43279 SCHOENHERR STERLING HEIGHTS, MI 48313
 PHONE (586) 739-8007 FAX (586) 739-6204
 WWW.FAZALKHAN.COM

PLOT DATE: 12-20-2012 DRAWING DATE: 07-15-2010
 PLOT SCALE: 1" = 400' DRAWING SCALE: 1" = 400'
 PLOT CNFG: ST-4D DRAWING FILE: 17-400'
 ATTACH XREF: DRAWING FILE: 17-400'

RICHARD STATHAKIS
SUPERVISOR

STANLEY GROT
CLERK

MICHAEL FLYNN
TREASURER

JOHN VERMEULEN
TRUSTEE

VINCE VIVIANO
TRUSTEE

LYNN WILHELM
TRUSTEE

DOUGLAS WOZNIAK
TRUSTEE

Charter Township of Shelby

PARCEL BASE MAP

SECTION **13**

ALL RIGHTS RESERVED

CAUTION

THIS MAP IS INTENDED FOR REFERENCE PURPOSES ONLY. FAZAL KHAN & ASSOCIATES AND THE CHARTER TOWNSHIP OF SHELBY DO NOT GUARANTEE THE ACCURACY OF THE INFORMATION AND DISCLAIM ALL LIABILITY FROM ALL CLAIMS, SUITS, DEMANDS AND JUDGMENTS ARISING FROM THE USE OF THIS INFORMATION.