



## Shelby Township Retail Profiles: Providence Park Mixed Use Development - 53200 Van Dyke Avenue Northeast Corner of Van Dyke and 24 Mile Road

[www.shelbytwp.org](http://www.shelbytwp.org)



**Real Estate Contact:**  
Jeff English  
586-709-0317

**Community Contact:**  
Glenn Wynn, AICP  
Planning Director Shelby Township  
586-726-7243  
[planning@shelbytwp.org](mailto:planning@shelbytwp.org)

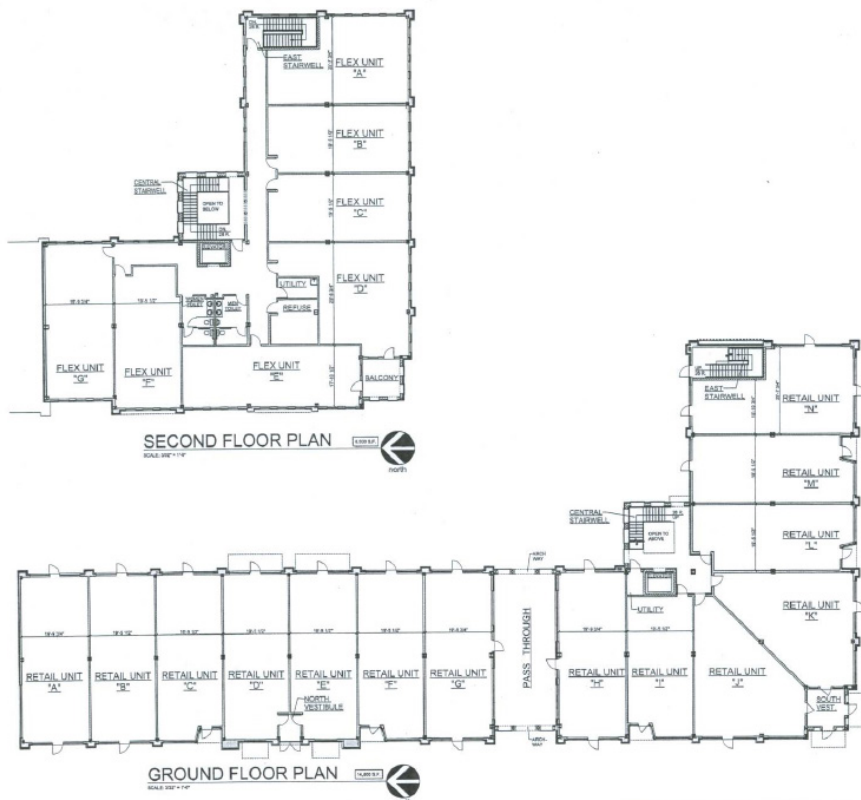
### Site Characteristics

- 3.21 Acres (Retail Portion)
- Northeast corner of Van Dyke and 24 Mile Road
- Zoned C-6, Shelby Center District (PUD)

### Population

- 1 Mile Radius - 4,702
- 3 Mile Radius - 57,596
- 5 Mile Radius - 158,059





- The retail portion of the development is currently vacant
- 400 ft. of road frontage on 24 Mile; 350 ft. on Van Dyke
- Public water and sanitary sewer are available to the site

**Households**

- 1 Mile Radius - 1,742
- 3 Mile Radius - 21,175
- 5 Mile Radius - 66,251

**Median Household Income**

- 1 Mile Radius - \$72,447
- 3 Mile Radius - \$71,008
- 5 Mile Radius - \$66,251

**Traffic Volume**

- 24 Mile: east 5,610; west 6,130
- Van Dyke: north 7,640; south 7,150

