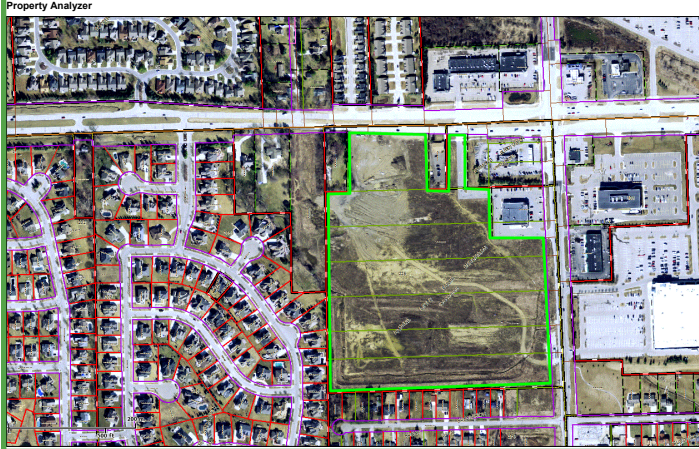




# Shelby Township Retail Profiles: Southwest Corner of Van Dyke Avenue and 26 Mile Road Proposed Shopping Center

[www.shelbytp.org](http://www.shelbytp.org)

26 Mile and Van Dyke



**Real Estate Contact:**  
Mid-American Real Estate Group  
Brad Rosenberg  
248-855-6800  
[brosenberg@midamericagr.com](mailto:brosenberg@midamericagr.com)

**Community Contact:**  
Glenn Wynn, AICP  
Planning Director Shelby Township  
586-726-7243  
[planning@shelbytp.org](mailto:planning@shelbytp.org)

### Site Characteristics

- 31.47 Acres
- Southwest corner of Van Dyke and 26 Mile
- Zoned C-3, Shopping Center Retail

### Population

- 1 Mile Radius - 8,805
- 3 Mile Radius - 44,284
- 5 Mile Radius - 106,449





- Vacant Land undeveloped

- Road Frontage: 775 feet on Van Dykem 550 feet on 26 Mile Road

- Public water and sanitary sewer are available to the site

### Households

- 1 Mile Radius - 3,196
- 3 Mile Radius - 16,194
- 5 Mile Radius - 38,610

### Median Household Income

- 1 Mile Radius - \$ 55,847
- 3 Mile Radius - \$ 72,134
- 5 Mile Radius - \$ 71,280

### Traffic Volume

- Van Dyke NB 7,630
- Van Dyke SB 7,280
- 26 Mile Road EB 7,940
- 26 Mile Road WB 8,100

