

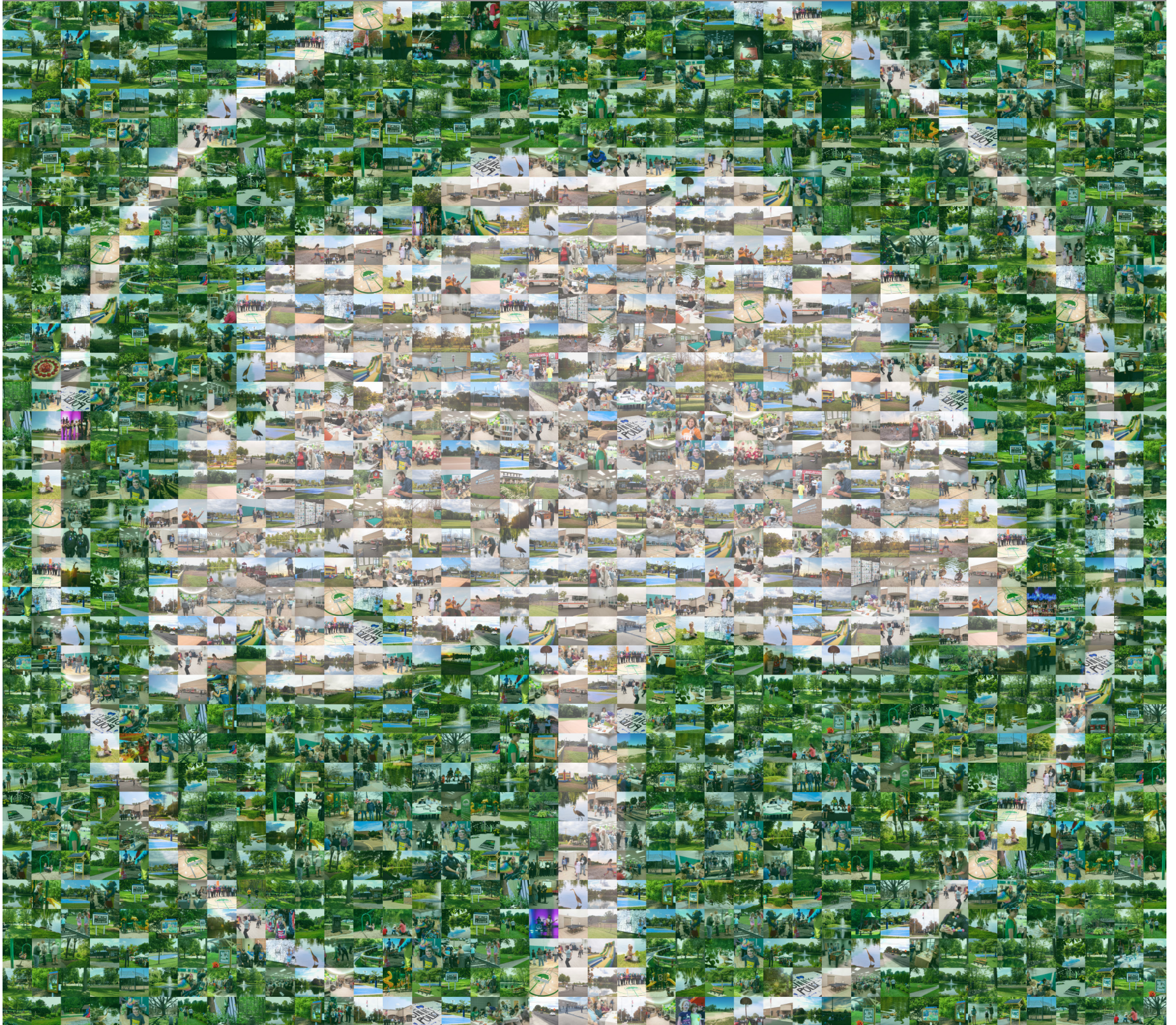


CHARTER TOWNSHIP
OF SHELBY

SPECIAL EDITION

Fountain

COVID-19 NEWS & INFORMATION



Macomb County's "Best Place to Live" three years in a row



Macomb County's "Safest City" of its size four years in a row

CLOSED

Shelby Township is operating under the "Stay Home, Stay Safe" executive order until May 1. Because of the evolving nature of the situation, dates, closures and information is subject to change.

Stay informed of all township-related updates online at shelbytwp.org.

For more information or to contact specific departments, see the directory guide on the back page.

The following facilities and areas are closed until further notice:

- Township Hall
- Shelby Township Activities Center
- Shelby Township Library
- Shelby Township Senior Center
- Burgess-Shadbush Nature Center
- River Bends Trap and Archery Range
- River Bends Disc Golf Course
- Woodall Skate Park
- Basketball courts
- Volleyball courts
- Pickleball courts
- Bocce ball courts
- Park pavilions
- Playgrounds
- Police Department Lobby

IF YOU FEEL SICK:

Don't call 911.

Unless you are experiencing a medical emergency, calling 911 for COVID-19 questions and symptoms uses valuable time and resources and exposes first responders.

Call your personal doctor.

Your doctor is prepared and able to handle your symptoms and advise you on a course of action.

Stay home.

Most people are able to recover from COVID-19 in their own home. Do not leave your house unless visiting your doctor. To prevent the spread of the virus, do not visit public areas.

Separate yourself from people.

Stay in a separate room from others in your house as much as possible. Avoid contact with others and pets. If possible, use a different bathroom.

Wear a mask when interacting with others.

A facemask should cover your nose and mouth and should be worn around people and pets.

Monitor your symptoms.

Common symptoms of COVID-19 include fever and cough. Check and record your temperature twice a day.

Wash hands often.

Use soap and water for at least 20 seconds especially after blowing your nose, coughing, sneezing, using the bathroom or eating.

End home isolation only after you are no longer contagious.

To determine if you are still contagious make sure you follow the following criteria:

- No fever for at least 72 hours without the help of fever-reducing medicine.
- Symptoms have improved.
- At least 7 days have passed since your symptoms first appeared.



Seek emergency medical attention if:

- You have trouble breathing
- Feel persistent pain or pressure in the chest
- Experience new confusion or the inability to arouse
- Have bluish lips or face

Call 911 and notify the operator that you have or think you might have COVID-19. If possible, put on a facemask before medical help arrives.

Follow the guidance of your healthcare provider and the Macomb County Health Department.

Resources:

Macomb County Health Department
health.macombgov.org/covid19

Macomb County Health Department COVID-19 Helpline
586-463-3750
Open 8:30 a.m.-5 p.m., Monday-Friday

State of Michigan COVID-19 Information Page
michigan.gov/coronavirus

Michigan Department of Health and Human Services COVID-19 Hotline
888-535-6136
Open 8 a.m.-5 p.m. seven days a week.

Michigan Department of Health and Human Services COVID-19 Email
COVID19@michigan.gov

CDC COVID-19 Page
cdc.gov/coronavirus

Get tested.

Go to michigan.gov/coronavirus to find a testing facility near you. Call the facility beforehand.

Shelby Township Board votes to provide \$1,500 in assistance to township first responders

Citing the need to support township personnel on the front lines of the COVID-19 outbreak, the Shelby Township Board of Trustees voted April 2 to award all sworn members and dispatchers of the Shelby Township Police and Fire departments with a one-time emergency stipend of \$1,500.

In response to the stipend, Shelby Township firefighters and police expressed their appreciation for the support and reaffirmed their commitment to the community.

“Due to the high level of risk associated with this pandemic, the Shelby Township Patrol Officers Association wants to express our sincere gratitude to the Board of Trustees,” a statement from the Shelby Township Patrol Officers Association said. “We are honored to work for and serve the citizens of Shelby Township.”

“On behalf of the hard-working and dedicated members of the Shelby Township Fire Department, we would like to offer our most sincere gratitude for the generous endowment you have bestowed upon us for those working through the COVID-19 Pandemic,” a statement from the Shelby Township Firefighter’s Union Local 1338 said. “Your unsolicited decision to offer and approve this goodwill gesture further solidifies your support of the men and women who are on the front lines during this unprecedented time.”

The funds are to help the firefighters and officers address personal and family needs for assistance during the pandemic while they are working to ensure the township’s 80,000 residents receive the first-rate public safety services that are a hallmark of the township.

“We are the safest community of our size in Macomb County and one of the safest in the entire state,” Township Supervisor Rick Stathakis said. “The dedication of our police officers and firefighters is the reason why, and this has never been more apparent than right now. Similar to the healthcare workers that are dealing with the pandemic daily, our first responders are coming to work every day and making sure our families, friends and neighbors have all the support they need to stay safe during this trying time.”

The Board’s special meeting vote to award the assistance to the first responders followed a vote by the Board to exempt emergency responders as defined by the U.S. Department of Labor and interpreted by the township’s Human Resources Department, from emergency paid sick leave and expanded Family and Medical Leave under the Families First Coronavirus Response Act.

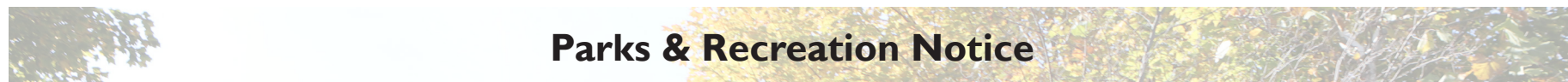
“We are all very appreciative and thankful to show our support for all of those who are going above and beyond to keep our community protected at this time,” Township Trustee Lynn Wilhelm said of her support for the emergency stipend. “Our hearts and prayers are with them and their families.”

At the start of the outbreak, the Board pledged to township employees that any time loss from work because of issues related to COVID-19 illness would be compensated and would not count against an employee’s accrued sick time.

“Shelby Township has the best services of any community in the state of Michigan and the lowest tax rate for a full-service community in all of Macomb County,” Township Clerk Stanley Grot said. “The reason we can do that is because of our employees. This relationship is why the Board made a promise to stand by all of our employees, and today’s vote to further support our first responders is an extension of that commitment.”

Because of the unprecedented burden placed on emergency personnel, township leaders felt they needed to support the response staff while they risk exposure to themselves and their families.

“Until COVID-19, we were enjoying the biggest economic boom in half a century, and then a novel Chinese virus pulls the rug out from all us,” Township Treasurer Michael Flynn said. “It was then that we got together, and we started talking about the men and women who are still out there working for us, standing between this invisible enemy and us. Shelby Township enjoys frugal, fiscally responsible government; we’re savers. We all agreed that this type of emergency is what we save for and the right thing to do.”



Parks & Recreation Notice

Before you visit, you should know:

Playgrounds, pavilions and active recreation are closed.

Until further notice, all playgrounds are closed. Additionally, basketball courts, volleyball courts, pickleball courts, bocce ball courts, the River Bends Disc Golf Course, the River Bends Trap and Archery Range, and other outdoor facilities are closed.

Facilities are closed.

Until further notice, the Shelby Township Activities Center, the Shelby Township Senior Center and the Burgess-Shadbush Nature Center are closed.

Pavilions, parks and facilities cannot be reserved.

The township is not taking bookings for picnic pavilions or any other facility until further notice to avoid large gatherings. If you have concerns or questions about future reservations, please call the Parks, Recreation and Maintenance Department at 586-731-0300, 8:30 a.m.-5 p.m., Monday through Friday or email shelbyprm@shelbytp.org.

Programs and events are cancelled.

All programs and events scheduled through May 8 are cancelled.

Senior center SMART bus service is suspended.

Shelby Township Senior Center has suspended SMART bus service until further notice.


In addition to following the guidelines for park use, you can help with the following measures to lessen the spread of the virus and return to regular use of all parks and facilities that much sooner.

- Wash your hands regularly with soap and water for at least 20 seconds at a time.
- Avoid touching your face.
- When in public, maintain a social distance of at least 6 feet.
- Cover your cough or sneeze with a tissue, then throw it away. If you don’t have a tissue, use your elbow.
- Clean surfaces you touch regularly.

Spring has sprung, and school is closed, so now is a better time than ever to enjoy more than 1,100 acres of Shelby Township parks. However, with social distancing a top priority to stem the spread of COVID-19, we ask that you exercise caution and good judgment when using and visiting our parks.

Keep in mind that you are recreating in a public space. While we are making efforts toward sanitation, each surface is only as clean as the last person who touched it. We can slow the spread of the virus and still enjoy our parks with a few easy to remember and follow guidelines.

- If you’re sick with any ailment, stay home.
- Avoid close contact with people who are sick.
- Stay close to home and keep visits short.
- Guests should bring their hand sanitizer to use during visits.
- Groups and gatherings of people are discouraged.
- Guests should keep a distance of at least 6 feet from others at all times. While on trails, alert others of your presence and step aside to let others pass at a safe distance.



Household Hazardous Waste Collection Day

POSTPONED

For more information about the event or details, contact the Department of Public Works at 586-726-7272 or visit shelbytp.org/recycling.



Clean-Up Day

CANCELLED

In accordance with the Macomb County Department of Roads, the Shelby Township Beautification Committee cancelled its April 25 Clean-Up Day event. A make-up day may be set by the committee during the summer. For more information, visit shelbytp.org





LOOK AT ALL YOU CAN DO WITH A LIBRARY CARD.

If you don't have a library card, you can get one remotely by contacting the Shelby Township Library at shelbylib@libcoop.net. Library staff checks email daily and will contact you to process your request to get you a library card for online use.



Libby by Overdrive

The Shelby Township Library has access to thousands of ebooks and audiobooks through its partnership with Libby by Overdrive. Patrons can borrow them for free using any device after downloading the app in the iTunes app store or through Google Play. It takes just a few taps to find and borrow a book. Libby has a groundbreaking, built-in ebook reader and a beautiful audiobook player. If you prefer, you can send books to your Kindle for reading. To use, open the Libby app, find your local library, and input your library card and PIN. Then you can search, sample, borrow and enjoy.

RBDigital

Check out your favorite audiobooks and magazines from the library. Download the RBDigital app in the iTunes App Store, Google Play or Amazon, select your library and log in with your library card number and PIN. You'll have instant access to more than 35,000 audiobooks without placing a hold. New magazines are available monthly.

Freemusic

All you need is your Shelby Township Library card number, and you can access more than 8 million songs and more than 15,000 music videos, including Sony Music's catalog of legendary artists. No software downloads or digital rights management restrictions apply. Visit freemusic.com to get started.

Mango Languages

Mango offers a fun-infused way to learn a new language by preparing learners for realistic conversations with everyday communication skills. It provides more than 70 world languages, including English. Visit learn.mangolanguages.com to get started today.

TumbleBooks

TumbleBooks offers an online collection of books for preschoolers, elementary school children and their families with no need for checkouts, waitlists or downloads. TumbleBooks provides on-demand access to audiobooks and ebooks. Make reading a fun experience for kids with read-along storybooks that feature adjustable online text and complete audio narration. Children can also access popular, award-winning and classic favorites in fiction, nonfiction and graphic novel categories. Accessible on any desktop or mobile device at www.tumblebooklibrary.com.

TumbleMath

TumbleMath offers a comprehensive collection of math picture books with animation and narration to help kids have fun with math. Designed for kindergarten to grade 6, TumbleMath provides lesson plans and fun activities and quizzes for each book. Visit www.tumblemath.com to get started.

TeenBookCloud

TeenBookCloud provides an online collection of books for middle school and high school students with no need for checkouts, waitlists or downloads. Teens can read and listen to books on-demand, improve reading and comprehension skills from a collection of hi/lo literature, and experience enhanced novels that feature professional narration and line-by-line text highlighting. Get instant access to the high school curriculum, including Shakespeare's plays and other classic works. Students can also access popular, award-winning and traditional favorites in fiction, nonfiction and graphic novel categories. Available on any desktop or mobile device at teenbookcloud.com.

AudioBookCloud

Listening to audiobooks has never been easier. No need for checkouts, waitlists or downloads as AudioBookCloud allows you to stream audiobooks on-demand. Browse and add titles to your favorites list from categories including mystery, suspense, romance and science fiction as well nonfiction biography, history and self-help titles. A catalog of classics and Spanish language titles is available as well. Visit audiobookcloud.com for an all-ages audiobook database

RomanceBookCloud

Get unlimited access to a curated collection of romance ebooks with RomanceBookCloud. Discover your next great romance read browsing contemporary, historical, time travel, paranormal or inspirational titles. With a core collection of 1,800 titles, including award winners, bestsellers, and new books, you will never run out of romance to read.

Ancestry

The Shelby Township Library's subscription to ancestry.com is usually only available in the library, but ancestry.com is currently offering remote access to library cardholders. Go to https://sbrb.ent.sirsi.net/client/en_US/sbl?, log in to our library catalog and click on "Ancestry Remote Access" in the top left corner to get started.

Tutor.com

Tutor.com offers students of all ages and job seekers a network of more than 3,000 professional academic and career tutors. Self-study tools provide additional modes of support that are available 24/7. Services include:

- Kindergarten through second-year college and adult learners can get help with homework, test preparation, skills and concepts they are learning in class as well as Advanced Placement test preparation and college entrance exams. Subjects include math, science, writing, English, Spanish, social studies, ACT, SAT, GED, HiSET and Microsoft Office.
- Students or adults working on essays, book reports, short stories, college or scholarship application essays, résumés, cover letters or tough math problems can submit their document or problem for an overnight review to receive detailed guidance and explanations.
- Use the Princeton Review's self-study modules to help prepare for the SAT or ACT. SAT/ACT Essentials includes full-length practice tests, a diagnostic score report, supporting video lessons and practice drills and college application advice.

**LIBRARY EVENTS CANCELLED THROUGH MAY 15.
VISIT SHELBYTWPLIB.ORG FOR UPDATES.**

Operating under the "Stay Home, Stay Safe" Executive Order, the Charter Township of Shelby has closed Township Hall and all associated buildings until May 1.

However, residents can use the adjacent directory to call any township department to leave a voicemail message. Appropriate personnel will return calls as soon as possible. Residents can also email township staff at the email addresses. Information is regularly updated at shelbytwtp.org/covid-19.

The township has several ways residents can digitally transact business at shelbytwtp.org/online_services. All requests are important and will be responded to in a timely fashion; some services may be limited.

Assessing:	586-731-5910	assessing@shelbytwtp.org
Building:	586-731-5969	building@shelbytwtp.org
Clerk's Office:	586-731-5102	sgrot@shelbytwtp.org
		ccowper@shelbytwtp.org
		shelbytv@shelbytwtp.org
		email not accepted
		dpw@shelbytwtp.org
		finance@shelbytwtp.org
Community Relations:	586-254-7130	hr@shelbytwtp.org
41 A District Court:	586-739-7325	shelbylib@libcoop.net
DPW:	586-731-5990	building@shelbytwtp.org
Financial Management:	586-731-5663	shelbyprm@shelbytwtp.org
Fire Department:	586-731-3476	planning@shelbytwtp.org
Human Resources:	586-726-7241	seniors@shelbytwtp.org
Library:	586-739-7414	
Ordinance Enforcement:	586-726-7248	
Parks and Recreation:	586-731-0300	
Planning and Zoning:	586-726-7243	
Police Department:	586-731-2121	
Senior Center:	586-739-7540	
Burgess-Shadbush Nature Center:	586-803-2300	naturecenter@shelbytwtp.org
Supervisor's Office:	586-731-5154	rsthathakis@shelbytwtp.org
		coland@shelbytwtp.org
Treasurer's Office:	586-731-5145	treasurer@shelbytwtp.org