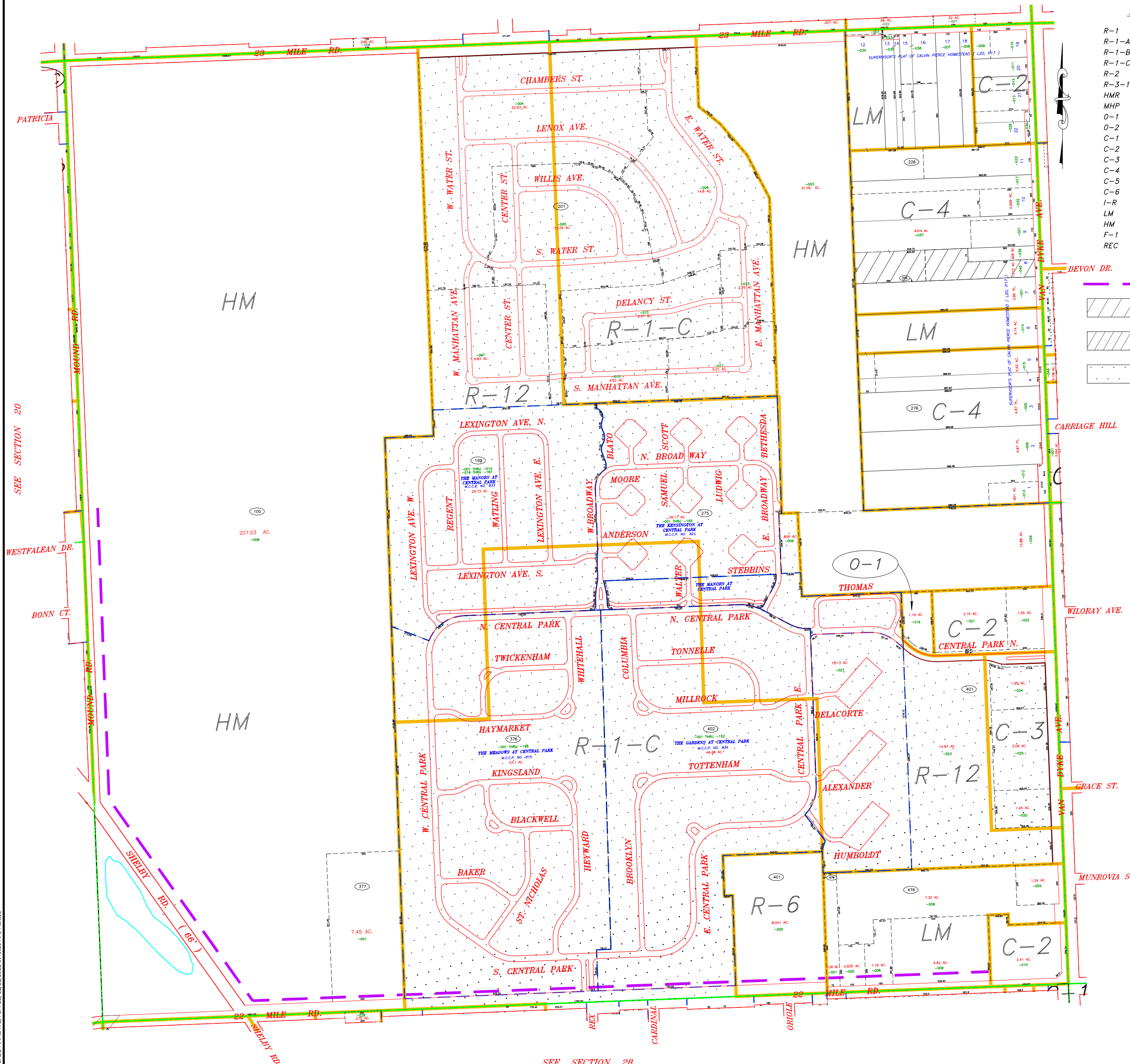


SEE SECTION 16

ZONING LEGEND

- R-1 ONE FAMILY RESIDENTIAL
- R-1-A ONE FAMILY RESIDENTIAL
- R-1-B ONE FAMILY RESIDENTIAL
- R-1-C ONE FAMILY RESIDENTIAL
- R-2 ONE FAMILY RESIDENTIAL
- R-3-12 MULTI FAMILY, LOW RISE
- HMR HIGH & MID RISE
- MHP MOBILE HOME PARK
- O-1 PROFESSIONAL OFFICE
- O-2 SERVICE OFFICE
- C-1 RETAIL BUSINESS, LOCAL
- C-2 LINEAR RETAIL BUSINESS
- C-3 SHOPPING CENTER BUSINESS
- C-4 GENERAL BUSINESS
- C-5 MULTI - USE
- C-6 SHELBY CENTER
- I-R INDUSTRIAL RESEARCH
- LM LIGHT MANUFACTURING
- HM HEAVY MANUFACTURING
- F-1 FLOODPLAIN
- REC RECREATION

- T-1 TRANSITIONAL
- CONSENT JUDGMENT OR DEED RESTRICTION
- CONDITIONAL REZONING
- PUD



SEE SECTION 28

SEE SECTION 20

SEE SECTION 22

MS:Shelby_Township_Mapping\Parcel_Base_Map_DWG_PBM_21_12/21/2012_8:48:20 AM_Mantou

REVISIONS / UPDATES	DATE	REMARKS	DATE	REMARKS
	12-20-2010	ADDED ZONING		
	12-20-2011	PARCEL SPLITS / CORRECTIONS		
	02-27-2012	STANLEY GROT		

FAZAL KHAN & ASSOCIATES, INC.
 CIVIL ENGINEERS & LAND SURVEYORS
 43279 SCHENBERG STERLING HEIGHTS, MI 48313
 PHONE: (586) 739-8007 FAX: (586) 739-6994
 WWW.FAZALKHAN.COM

PLOT DATE: 12-20-2012 DRAWING DATE: 07-15-2010
 PLOT SCALE: 1" = 400' DRAWING SCALE: 1" = 400'
 PLOT CONFG: ST.AD PROJECT NO: ST.AD
 ATTACH XREF: DRAWING FILE: DRAWN BY: JAJ CHECKED BY: T

RICHARD STATHAKIS
 SUPERVISOR
STANLEY GROT
 CLERK
PAUL VIAR
 TRUSTEE
PAULA C. FJAR
 TRUSTEE
MICHAEL FLYNN
 TRUSTEE
LISA MANZELLA
 TRUSTEE
DOUGLAS WOZNIAK
 TRUSTEE

Charter Township of Shelby

PARCEL BASE MAP

SECTION **21**

*ALL RIGHTS RESERVED

CAUTION

THIS MAP IS INTENDED FOR REFERENCE PURPOSES ONLY. FAZAL KHAN & ASSOCIATES AND THE CHARTER TOWNSHIP OF SHELBY DO NOT GUARANTEE THE ACCURACY OF THE INFORMATION AND DISCLAIM ALL LIABILITY FROM ALL CLAIMS, SUITS, DEMANDS AND ADJUSTMENTS ARISING FROM THE USE OF THIS INFORMATION.