



Fountain

Township News & Information

Shelby Township Board of Trustees:
Rick Stathakis, Supervisor

Stanley T. Grot, Clerk

James Carabelli, Treasurer

Lisa Casali, Trustee

Lucia Di Cicco, Trustee

John Vermeulen, Trustee

Vince Viviano, Trustee



6-7 DECK THE HALLS

There's nothing like Christmas in Shelby Township. This year's festivities start with the Christmas Aglow Dec. 1 at 52700 Van Dyke Ave. Join your neighbors for carols, hot chocolate and see Santa Claus light the township's Christmas tree. For more information on the Aglow and all Christmas programs, check our special holiday guide on pages 6-7.

5 WINTER WONDERLAND

Enjoy a winter hike through River Bends Park with this self-guided family fun activity. Snowshoeing is a great way to explore a snowy wonderland while staying active and healthy during the colder months. Check page 5 for more info on snowshoe rentals at the Burgess-Shadbush Nature Center.

12 HOME SAFETY FOR THE HOLIDAYS

Keep your home, family and friends safe this year with helpful holiday safety tips from the Shelby Township Fire Department and the National Fire Prevention Association. For more holiday and winter safety tips, visit shelbytwp.org/fire.



10 ALL I WANT FOR CHRISTMAS

Head down to the Shelby Township Library for fun winter and holiday programs. While you're there, check out the Friends of the Library holiday book bundle sale. The Friends select the best of the best from their used book store, and personally wrap themed bundles. These make the perfect gift for readers young and old.

NOW HIRING

**Part-time Mechanical
Inspectors - Plan Reviewers**
Starting at \$36.26 per hour



Charter Township of Shelby
BUILDING
586-731-5969
building@shelbytwp.org

**Shelby Township has employment opportunities for
inspectors that you don't want to miss!**

The Charter Township of Shelby is looking to hire a part-time Mechanical Inspector.

We are a high-growth community with a diverse mix of single-family and multi-family residential, commercial and industrial developments. The position offers a flexible work schedule, use of a township vehicle, and potential reimbursement for continuing education required for State registration. The starting rate of pay is \$36.26 per hour, and

inspectors with multiple registrations start at \$36.88 per hour.

Positions require at least two years of experience with associate's degree or five years of experience with high school diploma/GED. Applicants must possess a valid driver license and driving record without limitations and State of Michigan registration as an Inspector and Plan Reviewer in the applicable disciplines.

Make sure your property is up to code this winter

Snow – All sidewalks must be free from accumulations of snow, sleet, ice and water. After a snowfall or other precipitation, Shelby Township Ordinance Section 58-528(a)(3) and (d) requires the removal of accumulations within 24 hours for residential and 48 hours for commercial and industrial properties.

Sidewalk—Property owners are responsible for maintaining safe conditions for sidewalks adjacent to their property, which includes a property's sidewalks in front and on the side. According to Shelby Township's ordinance Section 58-528, sidewalks must be clear from obstructions such as low-hanging branches, shrubs or bushes that protrude into and over the sidewalk. Trim obstructions behind the edge of the sidewalk and branches need to be trimmed high enough to allow a bicyclist to pass underneath.

Firewood—Firewood is permitted on residential lots for personal home heating purposes only. Shelby Township's ordinance Section 3.35 requires that firewood be neatly stacked. While not required, firewood should be raised off the ground to prevent animals from nesting under it. The sale of firewood is prohibited.

Trash—All trash, recyclable materials and residential yard waste must be gathered, stored and placed in a closed container or containers sufficient in size and number to store the waste. Under Shelby Township's ordinance Section 62-6(6), place containers at the

curb after 5:30 p.m. the day before pick up and removed from curbside by 8 p.m. the day of pick up. For large amounts of waste, order a dumpster through a waste hauler. For large items such as furniture and appliances, single-family residences can call GFL Environmental at 888-877-4996 to schedule a pick-up. Place large items at the curb on your regular, scheduled collection day.

Sales—Personal garage, yard, estate or similar-type sales do not require a permit. Only two sales are allowed in a 12-month period at one location, and each sale can only last four or fewer days. Sale signs are only allowed on the property of the sale and other private property with the consent of the property owner. Signs shall not be attached to any utility poles or trees and cannot encroach into any road right-of-way, which is typically the area between a sidewalk and street. Immediately remove all signs following the sale.

Signs—Signs shall not be attached to any utility poles or trees and cannot encroach into any road right-of-way, which is typically the area between a sidewalk and street. Property owners must approve all sign placements on a property.

Shelby Township Ordinance Enforcement

52700 Van Dyke Ave., Shelby Township, MI 48316
Phone: 586-726-7248
Email: orderf@shelbytwp.org
Web: shelbytwp.org/ordinance



From the Treasurer - James Carabelli

Winter property tax statements are issued **Dec. 1** and payable through **Feb. 28, 2023**.

Pay Your Bill:

- **Online** at shelbytwp.org/treasurer or phone, toll free, by **calling** 844-701-5086. Pay with **credit, debit** or (online only) **echeck**. Fees will apply.
- **Drop box** at the 24 Mile Road exit and North Entrance of the municipal building. Drop boxes are closed at midnight on the due date.
- **Mail** a check to 52700 Van Dyke Ave., Shelby Twp., MI 48316. All payments must be in or postmarked by **Feb. 28, 2023**.
- **Fifth Third Bank** branches in Shelby Township. Visit 53.com for locations and hours. To pay your bill at Fifth Third Bank, you must present the entire bill that you received in the mail and pay in full with cash or check.
- **Pay in person** at the municipal offices with cash, check, credit, or debit. Fees will apply for credit or debit.

**For more information, contact the
Treasurer's Office at 586-731-5145 or
treasurer@shelbytwp.org.**

Veterans Memorial Paver Program

The Shelby Township Veterans Memorial Paver Program allows the community to support the local military community through three paver options.

For military families or veterans there is a tan clay 4-by-8-inch or 8-by-8-inch square placed with honor at the foot of the memorial. Private donors receive a red clay 4x8-inch paver or 8x8-inch square placed surrounding the memorial. A gray 16-by-16-inch square is available.

A 4x8-inch engraved paver costs \$100. An 8x8-inch engraved paver costs \$200, and 16x16-inch engraved pavers cost \$400. For information, call **586-731-5154** or email info@shelbytwp.org.



Shelby Township unveils 2023 priorities

Civic Center Plan makes list at Nos. 3 & 9

As the Shelby Township Board of Trustees unveiled the township’s new 2023 priorities on Nov. 15, three new directives made the list supporting a vision for a more connected community with investments in quality-of-life infrastructure.

The No. 3 priority, “Prioritize the Civic Center Development Plan,” and the No. 9 priority, “Acquire Campus Property to support the Civic Center Development Plan” addressed the township’s Civic Center Master Plan project, which resulted from the 2022 priorities where residents placed an initiative to replace the township’s bandshell and investigate more options for programs and events on the township’s municipal campus at 24 Mile Road and Van Dyke Ave.

“What’s exciting is that the Civic Center Development Plan made it in the top three,” Planning Director Julijana Misich-Rasaweher said. “Responding to the residents from the 2022 priorities with a plan in place within one year was a big accomplishment, and it’s rewarding to see that plan get support at No. 3 with support for acquiring more property to execute the plan at No. 9.”

Along with improving the municipal campus, the township has a new priority to “Enhance Recreation at the Shelby Township Activities Center” checking in at No. 10.

“Since we reopened after the pandemic, traffic

has been really heavy at the activities center,” Parks, Recreation and Maintenance Director Joe Youngblood said. “Whether senior center programs during the day or drop-in sports and classes after 5 p.m., the center is always hopping. It’s no surprise the community wants even more from this facility.”

Along with the priorities for acquiring property and enhancing the activities center, the other new addition to the top 10 came in at No. 6 with “Participate in Local Road Improvement Funding.”

In addition to three new items, the township has a new top priority. “Continue Blight Enforcement” returned to the priorities at the No. 1 spot after ranking No. 3 in 2022.

“I am proud of the work Planning Director Julie Misich and Building Director Tim Wood did to lay the groundwork for combatting blight in our township, and I’m excited to see them implement and expand those plans,” Township Supervisor Rick Stathakis said.

The priorities came from information gleaned from the annual community visioning process, which included online surveys of the public, township department heads and the Board of Trustees. Tabulation giving all three groups equal weight determines the annual priorities.

“We had a record for resident participation in this year’s visioning process with 694 surveys completed,” said Misich-Rasaweher, who coordinates the annual community visioning process.

“Widen Schoenherr Road North of 23 Mile Road,” placed second after finishing eighth in 2022. “Expand Sidewalk Connectivity” moved from No. 2 in 2022 to No. 7 in 2023. “Improve Crosswalk Safety Near Schools & Parks” moved to No. 8 after ranking No. 7 in 2022.

“Since 2019, the township installed more than 6,000 feet of sidewalks and connected 4,500 homes and 15,000 residents with pedestrian access to River Bends Park,” said Township Trustee Lisa Casali, who is the Board representative on the township’s sidewalk committee.

In addition to new sidewalks, Casali said the township used a \$291,219 grant to improve pedestrian crossing and connectivity between neighborhoods, parks and schools.

“We were awarded part of the Transportation Alternatives Program for Fiscal Year 2022 and 2023,” Casali said. “These go to six crosswalks throughout the township. One will cross 25 Mile Road between the driveway for Malow Junior High School and the traffic signal at Eisenhower High School’s Performing Arts Center entrance to allow access to the schools from the neighborhoods north of 25 Mile Road.

“Another crosswalk spans 24 Mile Road at Wolf Drive into Mae Stecker Park. This crossing provides access to the park, the municipal campus, and the new Shelby Township Library. And, crosswalks on 21 Mile and 22 Mile roads will improve connectivity to give safe access to the pedestrian bridges over the M-53 Expressway.”

2023 Top 10 Priorities

3 Prioritize Civic Center Development Plan	4 Seek Grant Opportunities	5 Plan for Long-Term Financial Obligations	2 Widen Schoenherr Road, North of 23 Mile Road
7 Expand Sidewalk Connectivity	8 Improve Crosswalk Safety Near Schools & Parks	9 Acquire Property to Support Civic Center Development Plan	6 Participate in Local Road Improvement Funding
			10 Enhance Recreation at the Shelby Twp. Activities Center



Did you know the Shelby Township Senior Center offers fitness classes? Check out the line-up and drop in for an instructor-led course for only \$3 per class. No advanced registration is required. Occasional cancellations may happen to accommodate programming or instructor schedules. You must be a senior center member to participate. Senior center registration for 2023 is underway. Memberships are \$5 for Shelby Township and Utica residents and \$10 for non-residents.

The senior center is located within the Shelby Township Activities Center at 14975 21 Mile Road and is open 8:30 a.m.-5 p.m., Monday-Friday. For information, call 586-739-7540 or email seniors@shelbytwp.org.

GROUP FITNESS @ Shelby Twp. Senior Center

YOGA 10-11 AM | MONDAY
1-2 PM | THURSDAY

This well-rounded mat yoga class includes standing and balancing postures and stretches on the mat. This class increases flexibility, strength and balance. Please bring your mat. Stephanie is the instructor.

ZUMBA GOLD 11:30 AM-12:30 PM | MONDAY

This workout incorporates dance and fitness set to Latin music. Zumba Gold is performed at a reduced intensity but still burns many calories. Join Donna for this upbeat and fun class.

BALANCE CLASS 1-2 PM | MONDAY

This medium-impact class uses many different techniques to strengthen the core and to build balance and coordination. Falls cause so many health concerns. Now is the time to work to prevent them. Class is led by Laura.

AEROBICS 10-11 AM | TUESDAY/FRIDAY

This class is our highest level of impact and focuses on aerobic moves. Class leg by Sabrina and Heather.

LINE DANCE 1-2 PM | TUESDAY

This class introduces line dance to participants. Lynn is the instructor.

CHAIR EXERCISE 10-11 AM | WEDNESDAY

In this low impact aerobic exercise class, participants sit in a chair for most of the class. Class is led by Laura.

CHAIRYOGA 2:15-3:15 PM | THURSDAY

This class is for people who have mobility challenges but would still like to experience the benefits of yoga. This class will use the wall and the chair for support and will not be on the floor. Stephanie is the instructor.

DRUM CLASS 11 AM-NOON | FRIDAY

Make exercise fun as Rhonda leads us with drum sticks and an exercise ball. This class combines sitting and standing exercises with music. All equipment is provided.

SPORTS

Online registration for Shelby Township parks and recreation programming is available through the township's platform at register.shelbytwp.org. If you have any questions, contact the Parks, Recreation and Maintenance Department offices at 586-731-0300 or shelbyprm@shelbytwp.org. The PRM offices are open 8:30 a.m.-5 p.m., Monday through Friday.

2023 YOUTH BASEBALL PROGRAM

Youth baseball registration for Shelby Township and Utica residents runs Jan. 13–March 18 with online, walk-in and phone-in options available. Nonresidents add \$10 per player. When registering online, you need your Household ID number and password. Email shelbyprm@shelbytwp.org or call 586-731-0300 to acquire that information. Register at register.shelbytwp.org.

Pee Wee Tee begins in early May and runs for seven weeks. All other leagues begin in late April or early May, depending on field conditions. Leagues are completed by July 4. Refunds in all other divisions are available through April 15. PRM deducts a \$10 fee from all refunds.

As a guide, most players play one to two seasons in each division before moving up to the next division.

Games and practices may also be on Fridays and Saturdays for all divisions if needed. Pee Wee Tee game times are 10 a.m. on Saturdays. Other game times are 6:15 p.m. on weekdays and vary on Saturdays if required. Boys' Baseball Ages 8-11 players that are 11-years-old should be players that are not ready for the Boys' Baseball Ages 11-13 Division.

All divisions will have approximately four practices and 12 games. Managers are allowed to request up to two other coaches, and one buddy request is allowed per player. Forming teams will NOT be permitted. Requests are not guaranteed, and your other coach or buddy must also request you.

The registration fee includes a team shirt, hat and an end-of-season award. Players supply

their glove. No games take place Memorial Day weekend. Practices and games take place at parks located throughout Shelby Township.

Volunteer coaches, officials and staff play a vital role in our sports leagues. Please consider taking some time to make your child's sports experience a positive one by volunteering as a coach or assistant coach. To assist you, we'll provide general rules and guidelines at a volunteer meeting held before the season. No coaching experience is necessary. For more info on volunteering, please call 586-731-0300.

Fees listed are for Shelby Township or Utica residents. Nonresidents add \$10 per player to fee.

REGISTRATION #	DIVISION	DAYS	DISCOUNT PRICE UNTIL FEB. 15	REGULAR PRICE
#YLBASE.01	Pee Wee Tee Ages 4-6	Sat	\$60	\$70
#YLBASE.02	Coach Pitch Ages 6-8	Mon & Wed	\$99	\$109
#YLBASE.03	Pitch Machine Ages 7-10	Tue & Thu	\$99	\$109
#YLBASE.04	Boys' Baseball Ages 8-11	Tue & Thu	\$99	\$109
#YLBASE.05	Boys' Baseball Ages 11-13	Mon & Wed	\$99	\$109
#YLBASE.06	Boys' Senior Ages 13-16	Tue & Thu	\$99	\$109

Shelby Township, DDA enhance Heritage Lake with new docks, pier, art



With fall colors, walking to Mae Stecker Park for ice skating, feeding baby ducks in spring or a lazy summer day fishing, Shelby Township's Heritage Lake on the municipal campus offers fun for all seasons.

This is why the Shelby Township Board of Trustees, the Parks, Recreation and Maintenance Department, and the Shelby Township DDA partnered to install several enhancements in and around the lake to ensure Heritage Lake remains enjoyable and accessible for future generations.

"There's no question that Heritage Lake, Heritage Garden, Mae Stecker Park and our municipal grounds are the epicenter for recreation in our community," Township Supervisor Rick Stathakis said. "With



The Beacon

that in mind, we have a tremendous team working to make that space even more enticing and draw more people to our township and the Van Dyke Ave. commercial corridor."

Crews from Wing Construction of Shelby Township installed the first improvements with two new docks on the lake. One pier leads into the lake from the path to Mae Stecker Park on the west side of the lake. Another dock, near the approach to the east entrance of Heritage Gardens, activates a previously unused portion of the park.

"The lake is beautiful, but we want to make it more accessible," Township Clerk Stanely Grot said. "I got the idea from watching these two young kids walking along the lake with fishing poles. We want to invite more people and kids to the lake and provide more areas to enjoy it."

"Heritage Lake is the No. 1 attraction in Shelby Township's parks," Parks, Recreation and Maintenance Director Joe Youngblood added. "One dock extends 40 feet into the lake and be T-shaped. The number of kids and families that can go out there is great."

In addition to the docks, future modifications will include pergolas, improved seating and added lighting. There will also be an expanded 40-foot fishing pier along the lake near the Heritage Lake Pavilion. The Board approved the project not to exceed \$695,092 at its June 21 meeting, and funds came from the township's federal American Recover Plan Act allotment.

In addition to the improvements, the Shelby Township DDA commissioned and funded a 20-foot sculpture near the lake. Artists Erik and Israel Nordin of the Detroit Design Center, who also designed pieces such as the "One World... Under Michigan Stars" Iron Belle Trail trailhead on Belle Isle, designed the installation titled. 'The Beacon,' represents the Shelby Township tree and a growing community. The Shelby

Township Library has a Beacon model on display.

"We have close to 50 pieces around the area, and we work with communities creating signature sculptures," Erik Nordin said. "We walked Heritage Lake and visited the park many times. It's a beautiful site and development with the new library.

"Art is personal and subjective, so its important to understand the community by meeting with the community, spending time there and learning as much as we can," Nordin added. "We took the concept of the tree and a growing township and put it through our lens to show the world."

Once completed and installed near the southeast portion of Heritage Lake, adjacent to the steps leading from Shelby Township Hall, the Beacon will welcome visitors to Heritage Lake and Heritage Garden.

"Two more phases with plantings and benchwork will help our citizens enjoy the Beacon year-round with a working reflecting pool," DDA member Franco Mancini said.

Burgess-Shadbush Nature Center chase Saway winter blues



Whether hitting snow-covered trails or booking a room for a birthday or holiday party, you can find something to pass the time until the sunshine returns.

Enjoy a winter hike through River Bends Park with this self-guided family-fun snow-shoeing.

Rentals are available during the Burgess-Shadbush Nature Center's regular business hours, 10 a.m.-6 p.m., Wednesday through Saturday, and noon-5 p.m. on Sunday. The cost is \$6 per person for two hours.

There must be at least 3 inches of snow on the ground. Remember, snowshoe sizes are based on weight, not shoe size. Limited quantities and sizes are available for adults and youth ages 5 and older. We recommend calling ahead to ensure we can accommodate you and your group.

The nature center is the perfect place to host a birthday or holiday party. Birthdays include encounters with live animal ambassadors and a guided nature hike or craft. Reservations include indoor rental space for four hours. The room holds a maximum of 40 adults and children. Hosts are responsible for decorations, food, table covers, cake and party favors. The fee is \$120 for Shelby Township and Utica residents and \$145 for nonresidents.

Are you looking for a space to host your family gathering? The nature center offers a warm and cozy indoor space for up to 40 people. In addition to an enjoyable rustic "up north" feel, there are hiking trails to explore, snowshoes to rent and live animals to meet. Rental includes tables, chairs and a refrigerator.

Outside food is welcome. No alcohol is permitted. Staff-guided programs such as crafts, wildlife presentations or hikes are optional at an additional fee. Rentals are \$30 per hour for Shelby Township and Utica residents and \$40 per hour for nonresidents.

For more information, contact the Burgess-Shadbush Nature Center at 586-323-2478 or email naturecenter@shelbytwp.org.



NOV. 1-DEC. 15

THE SHELBY TOWNSHIP POLICE DEPARTMENT AND SHELBY TOWNSHIP HALL ARE COLLECTING NEW TOYS IN THE POLICE DEPARTMENT AND TOWNSHIP HALL LOBBIES. YOU CAN DROP OFF YOUR GIFTS IN THE TOYS FOR TOTS COLLECTION BOXES 8:30 A.M.-5 P.M., MONDAY-FRIDAY, AT TOWNSHIP HALL OR 24/7 AT THE POLICE DEPARTMENT. THE COLLECTION RUNS UNTIL DEC. 15 TO GIVE DESERVING CHILDREN A MERRY CHRISTMAS.

SHELBY TOWNSHIP POLICE DEPARTMENT
52530 VAN DYKE AVE.

SHELBY TOWNSHIP HALL
52700 VAN DYKE AVE.

Christmas

GIVING TREE
NOV. 28-DEC. 23



SANTA LETTERS
NOV. 28-DEC. 11

VISIT THE LIBRARY CHILDREN'S AREA STARTING NOV. 28 TO WRITE A LETTER TO SANTA AND PLACE IT IN THE SPECIAL MAILBOX BY DEC. 11. OUR ELVES MAKE SURE YOU HEAR BACK FROM SANTA BY MAIL. THIS PROGRAM IS A COPPERTAIVE EFFORT WITH THE UTICA SHELBY TOWNSHIP KIWANIS, THE SHELBY GOLDEN K KIWANIS AND THE SHELBY TOWNSHIP LIBRARY.

SHELBY TOWNSHIP LIBRARY
52160 VAN DYKE AVE.

THE SHELBY TOWNSHIP HALL GIVING TREE ALLOWS THE COMMUNITY TO SPREAD GOODWILL. RESIDENTS CAN FOLLOW THE LINK ON SHELBYTWP.ORG/CHRISTMAS TO THE GIVING TREE AMAZON WISHLIST TO PURCHASE ITEMS FOR THE SAMARITAN HOUSE FOOD PANTRY, WHICH OPERATES WITH 17 CHURCHES IN SHELBY TOWNSHIP AND OTHER COMMUNITIES. WISHLIST ITEMS ARE SHIPPED TO TOWNSHIP HALL AND ARE DELIVERED TO SAMARITAN HOUSE IN JANUARY. RESIDENTS CAN ALSO PURCHASE ITEMS AND PLACE THEM UNDER THE TOWNSHIP HALL CHRISTMAS TREE AT 52700 VAN DYKE AVE. OR AT THE SHELBY TOWNSHIP ACTIVITIES CENTER AT 14975 21 MILE ROAD OR THE SHELBY TOWNSHIP LIBRARY AT 52610 VAN DYKE AVE. THE COLLECTION RUNS THROUGH DEC. 23.

* * *
CHRISTMAS LIGHTS CONTEST
* * *
DEC. 12-DEC. 21

SHELBY TOWNSHIP IS LOOKING FOR THE COMMUNITY'S BEST HOLIDAY LIGHTS. SEND UP TO FOUR PICTURES OF YOUR HOME IN FULL ILLUMINATION TO MADAMS@SHELBYTWP.ORG BY DEC. 12 TO ENTER. WE POST ENTRANTS ON SHELBYTWP.ORG/CHRISTMAS AND THE PRM FACEBOOK PAGE DEC. 13-20. PARKS, RECREATION AND MAINTENACE STAFF WILL SELECT FIRST AND SECOND-PLACE WINNERS DEC. 21 ON SHELBY TV'S "2022 CHRISTMAS LIGHTS SPECIAL." THE SPECIAL AIRS ON SHELBY TV, YOUTUBE.COM AND THE PRM FACEBOOK PAGE. ENTRIES MUST BE RESIDENTIAL HOMES. BUSINESSES ARE NOT ELIGIBLE.



- | | |
|--------------|---------------|
| TOOTHPASTE | DISH SOAP |
| DEODORANT | PAPER TOWEL |
| RAZORS | LAUNDRY SOAP |
| SHAMPOO | DIAPERS |
| TISSUES | TOOTHBRUSHES |
| TOILET PAPER | ADULT DIAPERS |
| | SOUP |
| | COFFEE |
| | CRACKERS |
| | JELLY |
| | CONDIMENTS |
| | PASTA/RICE |



* * *
TOWNSHIP HOLIDAY CLOSURE
* * *
DEC. 24-JAN. 2

* SHELBY TOWNSHIP OFFICES ARE CLOSED DEC. 24-JAN. 2, 2023. THE SHELBY TOWNSHIP ACTIVITIES CENTER, SENIOR CENTER, BURGESS-SHADBUSH NATURE CENTER AND SHELBY TOWNSHIP LIBRARY HAVE SPECIAL HOLIDAY HOURS LISTED AT SHELBYTWP.ORG. ALL FACILITIES RETURN TO REGULAR HOURS ON JAN. 2, 2023. FOR EMERGENCY SERVICES DIAL 911. FOR NON-EMERGENCIES, DIAL 586-731-2121. *



Events

Dec. 3

10 AM @ SHELBY TWP. ACTIVITIES CENTER
14975 21 MILE ROAD

Event includes a delicious breakfast, a small gift from Santa and a holiday craft. High chairs and booster seats are unavailable, and we do not sell tickets at the door. Call 586-731-0300 for tickets.



Dec. 7

10:30 AM @ PALAZZO GRANDE
54660 VAN DYKE AVE.

**TIDINGS & TINSEL
SENIOR LUNCHEON**

Dec. 10

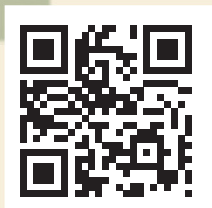
10:30-11:30 AM & 1:30-2:30 PM @
SHELBY TOWNSHIP LIBRARY
52160 VAN DYKE AVE.

**COOKIE HOUSE
DECORATING**

Dec. 21

11 AM @ SHELBY TWP. SENIOR CENTER
14975 21 MILE ROAD

**SENIOR CHOIR
CHRISTMAS
SING-A-LONG**



**FOR MORE INFORMATION ON EVENTS, VISIT SHELBYTWP.ORG/CHRISTMAS,
CONTACT SHELBY TOWNSHIP COMMUNITY RELATIONS AT 586-254-7130
OR EMAIL INFO@SHELBYTWP.ORG**

Dec. 1

7 PM @ MUNICIPAL CAMPUS
52700 VAN DYKE AVE.



Join your neighbors for Christmas carols, hot chocolate, reindeer visits, horse-drawn wagon rides, marshmallow roasting and free pictures with Jolly Old St. Nick at the Shelby Township library's fireplace. Bring your wish list!

Dec. 3

1-5 PM @ BURGESS-SHADBUSH NATURE CENTER
4101 RIVER BENDS DRIVE

Celebrate the holiday in frontier fashion with historically accurate games and activities such as candle-dipping and crafting rustic ornaments. Learn how early European settlers celebrated Christmas by meeting reenactors, visiting our authentic pioneer cabin, and observing family traditions from that era. Tickets are \$5 for Shelby Township and Utica residents and \$7 for nonresidents. Infants under 2 are free

Dec. 16

5 PM @ SHELBY TWP. SENIOR CENTER
14975 21 MILE ROAD

**MISTLETOE MANIA
SENIOR DINNER DANCE**



Dec. 17

10 AM-2 PM @ BURGESS-SHADBUSH
NATURE CENTER
4101 RIVER BENDS DRIVE



Join the Macomb County Audubon Society's annual Christmas bird count. All skill levels are welcome. The day includes basic information on bird identification and ways to attract and observe winter birds. Participants gather data, watch the nature center feeders and hike around River Bends Park to observe various winter bird species. The nature center has a limited supply of binoculars, so bring yours if you can.



Important Flood Information

FLOOD HAZARD AREAS — Portions of Shelby Township are encumbered by the 100-year floodplain. The areas most susceptible to flooding are along the main and middle branch of the Clinton River. Smaller floodplain areas exist proximate to the Harris, Longstaff, Decker, Dunn and Bannister Drains. Of course, any drain, stream, river or other body of water in the township poses a flooding risk.

Find out if your property is in the regulated 100-year floodplain and additional information on floodway, Historical Flooding and Wetland by calling the Shelby Township Floodplain Management Office at 586-731-5969 or by visiting the Building Department. The township keeps records of elevation certificates for public view. Maps can also be reviewed online at fema.gov or by visiting the Building Department.

FLOOD SAFETY — Here are some things you can do to protect your family and property from flooding.

- **Contact your property insurance agent to see if a flood insurance policy would help you.** Even if you're not in the mapped floodplain, you may be subject to flooding from local drainage. In either case, flood insurance can be a good investment because most homeowner insurance policies do not cover damage caused by surface water flooding.
- **Do not walk or drive through flood water.** Currents are deceptive; just six inches of moving water can knock you off your feet. Do not drive around barriers, as the road or bridge may be washed out.
- **Stay away from power lines and electrical wires.** If your house is about to be flooded, turn off the power at the service box. Electrical current can travel through water. Electrocutation is the second leading cause of death during floods.
- **Be alert to gas leaks.** Turn off the gas to your house before it floods. If you smell gas, report it to a township official or your gas company. Do not use candles, lanterns or open flames if you smell gas or are unsure if your gas has been shut off.
- **Keep children away from the flood waters, ditches, culverts and storm drains.** Flood waters can carry unknown items that have dislodged themselves. Culverts may suck smaller people into them rendering them helpless.
- **Clean everything that has been wet.** Flood water will be contaminated with sewage and other chemicals which pose severe health threats.
- **Look out for animals, especially snakes.** Small animals that have been flooded out of their home may seek shelter in yours.
- **Do not use gas engines, such as generators, or charcoal fires indoors during power outages.** Carbon-monoxide exhaust can pose serious health hazards.

PROPERTY PROTECTION MEASURES — Talk to us about protecting your house or business. There are ways to modify your building to minimize flood damage. Where flooding is shallow, measures such as small flood-walls, regarding the yard, and flood-proofing the

walls or utilities can be relatively inexpensive. Where flooding is deep, a building may need to be elevated.

Check with the Shelby Township Building Department before you build, alter, regrade or fill on your property. Call **586-731-5969** first. A permit may be needed to ensure that a project is compliant with all regulations. These regulations are designed to protect your property from flood damage and to make sure you do not cause a water problem for your neighbors.

FLOODPLAIN PERMIT REQUIREMENTS — All development within the 100-year floodplain (including construction of buildings, filling, excavation, fences, etc.) is required to obtain a permit from the Shelby Township Building Department. Other state and local permits may be applicable too. Applications must be made prior to doing any work in a floodplain area. Please contact the Building Department to receive all the information you will need in order to properly develop in the floodplain at 586-731-5969. You may report any unlawful development activities to the above number as well.

SUBSTANTIAL IMPROVEMENT/DAMAGE — For buildings within regulated floodplains, the National Flood Insurance Program requires that, if the cost of improvements to a building or the cost to repair damages (from any cause) exceeds 50 percent of the market value of the building (excluding land value), the entire building must be brought up to current floodplain management standards. Building improvement projects include exterior and interior remodeling, rehabilitation, additions, and repair and reconstruction projects. Please contact the Shelby Township Building Department at **586-731-5969** for further information.

FLOOD INSURANCE — If you do not have flood insurance, talk to your insurance agent. Most homeowner's insurance policies do not cover damage from floods. Flood insurance is only available to participating communities in the National Flood Insurance Program

(NFIP), such as Shelby Township. Our commitment to floodplain management helps to minimize flood hazards and enables us to be a part of the NFIP. Additionally, because Shelby Township participates in the Federal Emergency Management Agency's Community Rating System program, flood insurance premiums are discounted.

Be sure to check your policy to ensure you have adequate coverage. Usually these policies cover the building structure, but not the contents. Contents coverage can also be obtained by asking. There is a 30-day waiting period before flood insurance coverage becomes effective. Plan ahead; do not wait until a flood is predicted before purchasing flood insurance.

If you are building within a floodplain, the purchase of flood insurance is mandatory if using a federally regulated/insured bank for a loan.

NATURAL & BENEFICIAL FUNCTIONS — Don't pour oil, grease, pesticides, or other pollutants down storm drains or into the ditches and streams. Our streams and wetlands help moderate flooding and are habitat for fish, frogs, and other species that provide us with recreation or food. Let's protect them and their homes. Floodplains play a valuable role in providing natural and beneficial functions to the area around, and including, Shelby Township. Floodplains that are relatively undisturbed provide a wide range of benefits to both human and natural systems. These benefits provide aesthetic pleasure as well as function to provide active processes such as filtering nutrients. Significant areas in Shelby Township's River Bends and Holland Ponds parks are located within the floodplain associated with the Clinton River. Both enhance waterfowl, fish and other wildlife habitats and provide feeding/breeding grounds. Lastly, such floodplain areas provide natural erosion control and open space so further flooding damage does not occur.



DRAINAGE SYSTEM MAINTENANCE — As simple as it may sound, keeping smaller ditches and streams free of debris dramatically improves run-off capacity in low-lying areas and greatly reduces the occurrence blockage that significantly contributes to flooding. It is illegal to dump materials into a required waterway and violators may be fined. If you see someone in the act of dumping in one of our watercourses, please report it to the Shelby Township Building Department at **586-731-5969** or the Macomb County Public Works Offices at **586-469-5327**.

ADDITIONAL INFORMATION — If you have flooding or draining concerns call the Shelby Township Building Department at **586-731-5969** for on-site assistance. If you should require further or more detailed information regarding flood-related issues in Shelby Township here are some additional sources:

- **Federal Emergency Management Agency (FEMA)**
15801 Michigan Ave.,
Dearborn MI, 48126
Phone: **800-621-3362**
Web: fema.gov
- **Shelby Township Building Department**
52700 Van Dyke Ave.,
Shelby Township MI, 48316
Phone: **586-731-5969**
Email: building@shelbytwp.org
Web: shelbytwp.org/building
- **Shelby Township Library**
52160 Van Dyke Ave.,
Shelby Township 48316
Phone: **586-739-7414**
Email: shelbylib@libcoop.net
Web: shelbytwp.org/library



Yard waste collection

9

GFL Environmental residential customers can recycle yard waste with their regular curbside collection until Dec. 16.

For 2022, yard waste collection ends Dec. 16. Yard waste consists of leaves, lawn cuttings, shrubs and tree trimmings. GFL Environmental residential customers should place yard waste into the designated brown containers, paper biodegradable bags or labeled containers up to 35 gallons in size.

GFL enforces a yard waste weight limit of 50 pounds. Brush and limbs less than 2 inches in diameter must be in bundles no longer than 4 feet and not exceeding a total of 18

inches in diameter or more than 50 pounds. Dirt, sod, large stumps, sand, gravel, concrete, rocks, animal feces and dead animals are not considered yard waste.

Yard waste containing plastic containers, potters, mulch bags or other plastic is considered contaminated and will be disposed of in regular trash. Please remove all plastic bags, ties and pieces from yard waste before placing on the curb.



GFL Environmental offers dedicated phone line for Shelby Township residential customers

GFL Environmental now offers a dedicated phone line for Shelby Township residential customers at **586-210-0754**. Residents can also get information at gflenv.com.

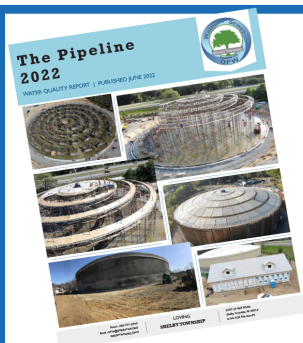
The township's Department of Public Works and Township Supervisor's Office manage township customer service with GFL Environmental. Report service issue with GFL Environmental at **586-210-0754**.

If you would like to contact the DPW, call **586-731-5990** or email dpw@shelbytwp.org. To contact the Supervisor's Office, call **586-731-5154** or email info@shelbytwp.org.

Trash Tips for GFL Customers

Christmas tree pick-up begins Dec. 26. Residents should cut trees over 7 feet in half before placing them at the curb. There is no interruption in waste collection for the Christmas and New Year holidays. Place waste containers at the curb per your regular schedule.

- Yard waste begins the first week of April and ends the second week of December.
- Cardboard boxes need to be flattened and put in your recycling bin or bound and placed next to your container.
- Mattresses and box springs must be wrapped in plastic before you put them curbside.
- Large items can be placed curbside on your pickup day.
- Place all trash at the curb by 7 a.m. or the night before your pickup day.
- GFL Observed Holidays: New Year's Day, Memorial Day, Independence Day, Labor Day, Thanksgiving and Christmas Day.



Shelby Township DPW 2022 Water Quality Report **The Pipeline**

Now Available at
shelbytwp.org/waterqualityreport

To have a copy mailed to you, contact Shelby Twp. DPW at **586-731-5990** or email dpw@shelbytwp.org

Save the date for 2023 recycling events

Household Hazardous Waste Collection

Saturday, April 29, 2023

9 AM - 2 PM

River Bends Park

5700 22 Mile Road

Electronics Recycling Collection


Saturday, Oct. 14, 2023

9 AM - 1 PM


River Bends Park

5700 22 Mile Road

Visit shelbytwp.org/recycling for more information



HELPFUL TIPS FOR WINTER ROADS



- ❄️ All township roads are under the jurisdiction of the Macomb County Department of Roads.
- ❄️ The MCDR must request assistance from Shelby Township before the township can assist with plowing.
- ❄️ Shelby Township may assist in clearing subdivision roads only - this does not include private streets, apartment complexes or condo communities.
- ❄️ The township does not salt when clearing subdivisions, therefore residents and motorists may still see snow after the township plows.
- ❄️ Even in heavy snowfall, the MCDR may choose not to contact the township to help clear roads. Circumstances like ice or heavy snowpack are better dealt with by the MCDR.
- ❄️ There are more than 30,000 homes lining residential streets and plows are unable to manually clear driveways or direct plowed snow away from driveways.
- ❄️ The MCDR will clear main roads before subdivisions. It may take a day or two after snowfall to clear all subdivisions.

The township forwards all calls for plow service to the MCDR. If you feel your home was missed, contact the MCDR directly at **586-463-8671** or visit roads.macombgov.org/roads-home-request.



SHELBY TOWNSHIP LIBRARY

Shelby Township Library
52610 Van Dyke Ave.
586-739-7414
shelbylib@libcoop.net
shelbytp.org/library

OPEN: 9 AM-8 PM, Mon-Thu
9 AM-5 PM, Fri-Sat
Closed: Sunday

The library will close at 5 p.m. on Dec. 22 for the holidays and has special holiday hours, 9 a.m.-3 p.m., Dec. 27 to Dec. 30. The outside 24/7 drop-box will be open for returning items.

PICK MY BOOKS

Fill out a brief form telling us what you're in the mood to read and what you're not interested in, and we'll pick three items we think you'll enjoy. Then, within three days, we'll have the books on hold for you and ready for pick-up at our check-out desk. Click the "Pick My Books" button on shelbytp.org/library to start your next literary adventure.

FRIENDS OF THE LIBRARY

Books by the Bundle Sale

NOV. 14-DEC. 22

What better way to celebrate the season than to give the gift of reading. The Friends of the Shelby Township Library are offering their ever-popular annual Books by the Bundle Sale starting Nov. 14 and running through Dec. 22, or while supplies last. Themed book bundles are beautifully wrapped in ribbon, bowed and ready for affordable gift giving at only \$8 each. New bundles are added daily. Hurry in because they sell out quickly! All proceeds from the sale of book bundles directly support the Shelby Township Library.

FRIENDS OF THE LIBRARY

Friends of the Library Monthly Meeting 10 AM, Thu 1/5, 2/2, 3/2, 4/6

The Friends of the Library is an independent, nonprofit support organization with elected officials. The Friends of the Library support the library with funds and volunteer services not provided for by library procedures.

The Friends sponsor activities for fundraising and membership enhancement and raise funds by assessing membership dues, holding fundraisers and selling items in the Friends' Bookstore. These funds provide furniture, equipment, events, programs, artwork and materials.

All library events listed in this publication were funded directly by the Friends of the Library.

CLUBS & GROUPS

Not Your Parents' Book Club 7 PM, Tue 1/31, 2/28

Meets at Steakhouse 22 on the last Tuesday of the month. No December meeting.

Afternoon Book Club 1 PM, Thu 12/15, 1/19, 2/16

Meets the third Thursday of the month.

Evening Book Club 6:30 PM, Tue 12/13, 1/10, 2/14

Meets the second Tuesday of the month.

Mystery Book Club

10:30 AM, Sat 12/10, 1/14, 2/11
Meets the second Saturday of the month. Special date for Nov.

Writers Group

6:30 PM, Thu 12/8, 12/22, 1/12, 1/26, 2/9, 2/23
Meets on the second and fourth Thursday of each month.

Book clubs meet in the library's Meeting Room unless otherwise noted.

TECH SUPPORT & TECH TALK

Tech Support

1-3 PM Tue
1/17, 1/31, 2/14, 2/28

Found yourself in a technology pickle? The tech librarian is available for questions during these two hour blocks. The program is first come, first-served. Bring your devices and questions and we will work together for a solution. Popular solutions include: setting up tablets with library e-services such as Libby and Hoopla, formatting word documents, and creating email accounts

Tech Talk

10 AM Mon

Bring your coffee and curiosity as our tech librarian covers popular topics in the technology world on Mondays at 10 AM. These classes are perfect for beginners and those wanting to learn a little more. All learners are welcome. Technology Lab

Jan. 16 - Computer Basics

Jan. 23 - iPad Basics

Jan. 30 - Using Library Digital Resources

Feb. 6 - Learn Canva for home and work

Feb. 13 - Creating an Online Dating Profile

Feb. 20 - Indeed Job board for beginners

Feb. 27 - Computer Basics



Registration required. Register online at shelbytp.org/library or call 586-739-7414.

KID & ALL AGE PROGRAMS

Baby Bears Storytime (Ages 2 & Under)

10-10:30 AM Fri
12/2, 1/13, 1/27, 2/10, 2/24, 3/10, 3/24
Drop in for short stories, songs, lap bounces and playtime with other little ones under 2 with a caregiver. Program Room

Families & Jammies Storytime (All Ages)

6:30-7 PM Thu
1/19, 2/16, 3/16
Put on pajamas and drop in for stories, songs and activities for the family. Program Room

Preschool Pages (Ages 3.5-5)

10-10:30 AM Tue
1/10-5/23 (No event 2/21 & 3/28)
Enjoy stories and activities for ages 3.5 - 5 to help prepare for kindergarten. Registration for Shelby Township residents is available online up to two weeks before each storytime you plan to attend. Program Room

Toddler Tales (Ages 2-3.5)

10-10:30 AM & 11-11:30 AM
Wed 1/11-5/24
(No event 2/22 & 3/29)
These are stories and activities for toddlers and caregivers. Registration for Shelby Township residents is available online up to two weeks before each storytime you plan to attend. Program Room

Paws to Read (All Ages)

9:30 AM-11:30 AM Sat
12/3, 1/21, 2/18, 3/18
Develop reading skills with a supportive friend who won't judge or interrupt. Children and their caregivers who check in at the children's desk can read to a certified therapy dog for 10 minutes. Bring a book from home or choose one from the library to read. Call ahead on the day of the program to ensure we have a volunteer and dog signed up for the day you would like to attend. Program Room

"Choose Your Own Adventure" Book Club (Ages 8-12)

6:30-7:30 PM Thu 12/15
We'll read a preselected "Choose Your Own Adventure" book. The adventurers decide which path the group takes. After reading, enjoy an activity inspired by the book. Program Room

Cookie House Decorating (All Ages)

10:30-11:30 AM & 1:30-2:30 PM
Sat 12/10
Design, build and decorate a small edible holiday house. Each child will get cookies, icing and assorted candies as building materials. Registration begins 11/19. Program Room

MellyPop! Puppet Show (All Ages)

1:30 PM Sat 1/7
MellyPop! Productions presents "The Goose is Loose!", a hilarious puppet show about a wise-cracking goose with golden feathers. Pickles and Cookie, two fairies, will share this tale loosely based on goose fables and fairy tales. Legacy Room

Lego Minecraft with Snapology (Ages 8-12)

6:30-7:30 PM Thu 1/12
Join Snapology as they help you bring the game of Minecraft out of the computer and

into the real world. Go on an adventure using your imagination and design mobs, animals or tools out of Legos. Registration begins Dec. 29. Program Room

Pokemon Hangout (All Ages)

1:30 PM Sat 2/4
Bring cards and games to play, trade and meet other Pokemon fans at this casual event. Enjoy themed crafts, activities and three door prizes. Legacy Room

Valentine Cards & Crafts (All Ages)

1:30-2:30 PM Sat 1/28
Decorate a card for residents of a local assisted living facility, then make a creation to take home. Legacy Room

Pokemania with Snapology (Ages 8-12)

6:30-7:30 PM Thu 2/9
Build and explore the world of Pokemon as Snapology helps you create your gyms and individual battles out of Lego bricks. Registration begins 1/26. Program Room

Nintendo Crafts (All Ages)

10:30-11:30 AM Tue 2/21
Put your do-it-yourself skills to the test and make themed crafts from favorite Nintendo games like Super Mario Bros., Splatoon, Animal Crossing, and The Legend of Zelda. Program Room

Lego Play Day (All Ages)

10:30-11:30 AM Wed 2/22
Drop in for free play with Legos, Duplos, and Mega Blocks. Test your building skills with some challenges or design your builds. Legacy Room

TEEN PROGRAMS

Teen Advisory Board (Grades 7-12)

6-7:30 PM Thu 1/5, 2/2, 3/2
Join the teen council that creates teen displays, decorates the library and plans teen events at the library. Earn community service hours every month for attending. Program Room

After School Teen Hangout (Grades 7-12)

3:30-4:30 PM Wed 1/4-5/31
(No event 12/21, 2/22 or 3/29)
Drop by after school to play tabletop, board, or party games. We'll show you how to play. Program Room

Teen Magic the Gathering (Grades 5 - 12)

1:30-2:30 PM Sat 2/25
Bring your deck for some relaxed play of Magic: the Gathering. All skill levels are welcome. Program Room

Teen Book Club (Ages 12+)

1:30-3 PM Sat 12/3, 1/14, 2/11
Meet other book-loving teens and discuss novels selected by readers just like you. Newcomers are always welcome. Meeting Room

- 12/3: "Trials of Apollo: The Lost Oracle" Rick Riordan
- 1/14: "Shadow and Bone" by Leigh Bardugo
- 2/11: "The Hawthorne Legacy" Jennifer Lynn Barnes

Teen Percy Jackson Trivia Night (Grades 7-12)

6-7:30 PM Fri 12/9
Think you know all things "Percy Jackson" and everything from Rick Riordan's other series

books? The winning team wins a prize as we test your knowledge of heroes and mythologies at this teen book trivia night. Registration begins 11/19. Legacy Room

Teen Night: Painting with Opossums (Grades 7-12)

6-7:30 PM Fri 1/20
Learn some facts about opossums and create your miniature art masterpiece alongside Lily the opossum, resident marsupial artist at the Burgess-Shadbush Nature Center. Registration begins 1/6.

Teen Night: No Bake Sweet Treats Workshop (Grades 7-12)

6-7:30 PM Fri 2/17
Make and take home some delicious and easy no-bake recipes that satisfy your sweet tooth. Registration begins 2/3. Program Room

ADULT PROGRAMS

Adult Craft: Introduction to Making Soap

7 PM Wed 12/7
Escape the season's stress and enjoy a relaxing meeting making soaps in beautiful colors and scents. Registration begins November 19.

Women of the Watch

7 PM Wed 1/18
Enjoy an evening with theater artist Anna Marck as she shares stories of female lighthouse keepers on the Great Lakes. In her performance, she recalls many of her childhood experiences at Michigan lighthouses, which eventually led to her fascination with and discovery of several incredible women who kept the lights on the Great Lakes. Legacy Room

Adult Table-top Game Day

1:30 PM Sat 1/21
Beat the winter blues and join us to play a game: an old favorite, or try something new. Meeting Room

UFO's Over Michigan

7 PM Wed 2/15
Did you know Michigan has some of the most significant UFO cases on record? For example, the 1966 sightings over southeast Michigan and the 1994 sightings over Grand Rapids had hundreds of eyewitnesses, including law enforcement and radar returns. Find out more about these events and other UFO sightings in the Great Lakes State from Bill Konkolesky, state director for the Mutual UFO Network Michigan chapter. Legacy Room

Community Preparedness

1:30 PM Sat 2/18
Join Public Health Preparedness Specialist Sarah Westerman for a presentation on community preparedness. We'll discuss common Macomb County hazards, types of emergencies communities face, how to prepare emergency kits and community resilience. Legacy Room

Library programs on these pages are funded by the Friends of the Shelby Township Library. You can support the Friends and the library by shopping at the library's Friends' Corner Bookstore.

Winter Holiday Safety

Winter holidays are a time for families and friends to get together. But that also means a greater risk for fire. Following a few simple tips will ensure a happy and fire-safe holiday season.

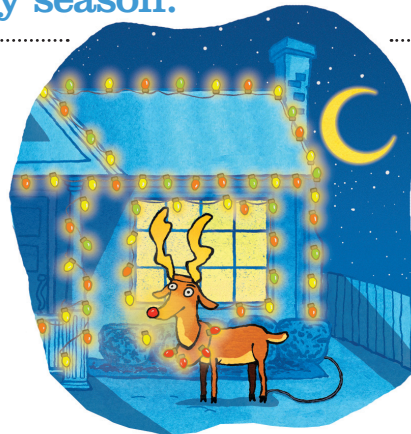
HOLIDAY DECORATING

- Be careful with holiday decorations. Choose decorations that are flame resistant or flame retardant.
- Keep lit candles away from decorations and other things that can burn.
- Some lights are only for indoor or outdoor use, but not both.
- Replace any string of lights with worn or broken cords or loose bulb connections. Read manufacturer's instructions for number of light strands to connect.
- Use clips, not nails, to hang lights so the cords do not get damaged.
- Keep decorations away from windows and doors.



HOLIDAY ENTERTAINING

- Test your smoke alarms and tell guests about your home fire escape plan.
- Keep children and pets away from lit candles.
- Keep matches and lighters up high in a locked cabinet.
- Stay in the kitchen when cooking on the stovetop.
- Ask smokers to smoke outside. Remind smokers to keep their smoking materials with them so young children do not touch them.
- Provide large, deep ashtrays for smokers. Wet cigarette butts with water before discarding.



Before Heading Out or to Bed

Blow out lit candles when you leave the room or go to bed. **Turn off** all light strings and decorations before leaving home or going to bed.

FACTS

- ! More than **one-third** of home decoration fires are started by candles.
- ! More than **two of every five** decoration fires happen because decorations are placed too close to a heat source.

TOWNSHIP DIRECTORY

Assessing

586-731-5910

assessing@shelbytwp.org

Building Department

586-731-5969

building@shelbytwp.org

Clerk's Office

586-731-5102

clerk@shelbytwp.org

Code Enforcement

586-726-7248

ordenf@shelbytwp.org

Community Relations

586-254-7130

info@shelbytwp.org

41A District Court

586-739-7325

41Ainfo@shelbytwp.org

Fire Department

586-731-3476

Emergencies dial 911

Human Resources

586-726-7241

HR@shelbytwp.org

Library

586-739-7414

shelbylib@libcoop.net

Parks, Recreation and Maintenance

586-731-0300

shelbyprm@shelbytwp.org

Planning Department

586-726-7243

planning@shelbytwp.org

Police Department

586-731-2121

Emergencies dial 911

Public Works

586-731-5990

dpw@shelbytwp.org

Supervisor's Office

586-731-5154

rsthakias@shelbytwp.org

Treasurer's Office

586-731-5145

treasurer@shelbytwp.org



NATIONAL FIRE PROTECTION ASSOCIATION

The leading information and knowledge resource on fire, electrical and related hazards



FOR MORE SAFETY TIPS, VISIT SHELBYTWP.ORG/FIRE



Macomb County's
Lowest-cost, full-service
Community

nfpa.org/education ©NFPA 2019



"Fountain" is published by the Shelby Township Community Relations Department
Charter Township of Shelby, Macomb County, MI
PHONE 586-254-7130 - info@shelbytwp.org - shelbytwp.org