



Fountain

Township News & Information

Shelby Township Board of Trustees:
Rick Stathakis, Supervisor

Stanley T. Grot, Clerk

James Carabelli, Treasurer

Lisa Casali, Trustee

Lucia Di Cicco, Trustee

John Vermeulen, Trustee

Vince Viviano, Trustee



5-7 HOLIDAY WISHBOOK

There's nothing like Christmas in Shelby Township. This year's festivities start with the Christmas Aglow at 6:30 p.m. Nov. 30 at 52700 Van Dyke Ave. Join your neighbors for carols, hot chocolate and see Santa Claus light the township's Christmas tree. New this year is a Christmas drone show courtesy of the Shelby Township DDA. For more information on the Aglow and all Christmas programs, check our special holiday guide on pages 5-7.

3 THEY'RE MAKING A LIST

Check out the Shelby Township Board of Trustees' 2024 Top 10 Priorities. Following a record-setting number of participants in the township community visioning exercise, the township has added three new programs and initiatives to the list of priorities for the coming year.

8 HOME SAFETY FOR THE HOLIDAYS

Keep your home, family and friends safe this year with helpful holiday safety tips from the Shelby Township Fire Department and the National Fire Prevention Association. For more holiday and winter safety tips, visit shelbytwp.org/fire.



4 YARD WASTE COLLECTION

Yard waste collection ends Dec. 15. Yard waste consists of leaves, lawn cuttings, shrubs and tree trimmings. GFL Environmental residential customers should place yard waste into the designated brown containers, paper biodegradable bags or labeled containers up to 35 gallons in size. There is no waste collection on Christmas and New Year's Day. Waste collection will be delayed one day those weeks.

2 Make sure your property is up to code this winter

Snow – Sidewalks must be free from accumulations of snow, sleet, ice and water. After a snowfall or other precipitation, Township Ordinance Section 58-528(a)(3) and (d) requires the removal of accumulations within 24 hours for residential and 48 hours for commercial and industrial properties.

Sidewalk—Property owners are responsible for maintaining safe conditions for sidewalks adjacent to their property, which includes a property's sidewalks in front and on the side. According to Township ordinance Section 58-528, sidewalks must be clear from obstructions such as low-hanging branches, shrubs or bushes that protrude into and over the sidewalk. Trim obstructions behind the edge of the sidewalk and branches need to be trimmed high enough to allow a bicyclist to pass underneath.

Firewood—Firewood is permitted on residential lots for personal home heating purposes only.

Township ordinance Section 3.35 requires that firewood be neatly stacked. While not required, firewood should be raised off the ground to prevent animals from nesting under it. The sale of firewood is prohibited.

Trash—All trash, recyclable materials and residential yard waste must be gathered, stored and placed in a closed container or containers sufficient in size and number to store the waste. Under Township ordinance Section 62-6(6), place containers at the curb after 5:30 p.m. the day before pick up and remove by 8 p.m. the day of pick up. For large amounts of waste, order a dumpster through a waste hauler. For large items such as furniture and appliances, single-family residences can call GFL Environmental to schedule a pick-up. Place large items at the curb on your regular collection day.

Sales—Garage, yard, estate or similar-type sales do not require a permit. Only two sales are

allowed in a 12-month period at one location, and each sale can only last four or fewer days. Sale signs are only allowed on the property of the sale and other private property with the consent of the property owner. Signs shall not be attached to utility poles or trees and cannot encroach the road right-of-way, typically the area between a sidewalk and street. Immediately remove all signs following the sale.

Signs—Signs shall not be attached to any utility poles or trees and cannot encroach into any road right-of-way, typically between a sidewalk and street. Property owners must approve all sign placements on a property.

Shelby Township Ordinance Enforcement

52700 Van Dyke Ave., Shelby Township, MI 48316

Phone: 586-726-7248

Email: orderf@shelbytwp.org

Web: shelbytwp.org/ordinance

WORK ELECTIONS, GET PAID.

Election Worker Job Fair

6 PM, Thursday, Nov. 9

@ Lower Level Conference Room
at 52700 Van Dyke Ave.

Are you passionate about the election process and eager to make a difference? Don't miss the Election Worker Job Fair at 6 p.m. Nov. 9 in the Lower Level Conference Room at Shelby Township Hall at 52700 Van Dyke Ave. Experienced workers need not attend.

Shelby Township will be holding three elections in 2024. With the passage of Proposal 22-2, many election changes will occur, and we will

need more election inspectors. Learn about various election roles including inspectors, chairs, co-chairs and election poll book inspectors.

Discover the essential responsibilities of election workers and get insights into the election process and its significance. Your participation as an election worker matters to the community. Don't miss this chance to be part of our election process and get paid

to work elections. Be part of the team that makes elections happen. We will be signing up new potential election inspectors. Please don't miss it.

Can't make the job fair? Applications are available at shelbytwp.org/apply. Return your application to the Shelby Township Clerk's Office at 52700 Van Dyke Ave, Shelby Township, MI 48316. Call 586-731-5102 for more information.

WORK ELECTIONS, GET PAID.

Winter Taxes: From Treasurer James Carabelli

Treasurer's Office issues winter property tax statements Dec. 1. Taxes are payable without penalty through Feb. 29, 2024. On March 1, 2024, all unpaid taxes, Summer and Winter, real and personal, are forwarded as "delinquent" to the Macomb County Treasurer for payment, with additional penalties assessed by the Macomb County Treasurer.

We do not recommend using online bill pay through your banking institution. However, if this is your preferred payment method, please consult your banking institution before doing so.

Please see below for ways to pay your bill:

The Treasurer's Office now offers more ways to pay:

- **Online** at shelbytwp.org/treasurer. Accepted forms of payment include: Visa, Mastercard, Discover and American Express; PayPal; Google Pay; Apple Pay; and Venmo. A convenience fee will apply for all payments.
- **Dropbox** at the 24 Mile Road exit and North Entrance of the municipal building.
- **Mail** a check. All payments must be in or postmarked by Feb. 29, 2024.
- Fifth Third Bank branches in Shelby Township. To pay by **cash or check only**, you must present the entire tax bill at the bank. Visit 53.com for locations and hours.



In an effort to better serve our residents and contractors, the Shelby Township Treasurer's Office and the Shelby Township Building Department now offer online payments through BS&A.

USE THE NEW ONLINE PAYMENT METHOD



START NOW



PROPERTY TAXES



SIDEWALK MAINTENANCE



SPECIAL ASSESSMENTS



BUILDING PERMITS

- ✓ Secure online portal
- ✓ No standing in line
- ✓ Pay from anywhere
- ✓ Environmentally friendly

52700 Van Dyke Ave., Shelby Township, MI 48316
586-731-5100



Shelby Township unveils 2024 priorities

Sidewalks, safe crossings make list at Nos. 1, 4 & 8

The Shelby Township Board of Trustees has officially announced its top 10 priorities for the year 2024.

These priorities were established through the annual community visioning session, a process that invites residents to actively participate in shaping the direction and development of their township. Three of the new top 10 priorities align with the goal of enhanced walkability.

“Our commitment to sidewalk connectivity and pedestrian safety is driven by a desire to create a more walkable and accessible community,” said Township Trustee Lisa Casali, who serves on the Sidewalk Committee. “Enhancing these aspects improves safety, creates a stronger sense of community and encourages a healthier lifestyle for our residents.

“It’s about making sure everyone, from school children to seniors, can navigate our township safely and with ease. We’re dedicated to creating an environment where people can choose to walk or bike, not just out of necessity, but because it’s a pleasant and convenient option.”

The 2024 top 10 priorities, as determined by the combined input of residents, the Board of Trustees, and Department Heads, are as follows:

No. 1 - Continue to pursue sidewalk connectivity: Shelby Township is dedicated to enhancing pedestrian infrastructure and ensuring better connectivity through sidewalks.

No. 2 - Continue Blight Enforcement: The township remains committed to addressing blight issues and maintaining the cleanliness and appeal of the community.

No. 3 - Prioritize the Civic Center Development Plan: This plan encompasses various improvements, including the development of a bandshell, a new farmer’s market pavilion and improvements to Mae Stecker Park.

No. 4 - Improve pedestrian and bike safety at crosswalks: Enhancing pedestrian and cyclist safety at crosswalks remains a focus to ensure safety for all.

No. 5 - Participate in local road improvements funding: Shelby Township aims to collaborate with the Macomb County Department of Roads to fund neighborhood road improvements.

No. 6 - Look for opportunities to expand recreation opportunities at parks: The township explores the expansion of recreational amenities, including pickleball courts, a bike skills area and a nature playground at local parks.

No. 7 - Remove debris within Clinton River: Aiming to provide more opportunities for kayaking, the township will focus on cleaning up the Clinton River through river cleanup grants and the establishment of a kayak launch.

No. 8 - Provide sidewalk connections and fill gaps to schools: Ensuring safe and convenient pathways for students, the township will work to connect sidewalks to schools.

No. 9 - Plan for long-term financial obligations: The township will continue its commitment to financial responsibility by effectively planning for long-term financial obligations.

No. 10 - Widen Schoenherr Rd from 25 Mile to 26 Mile Rd: Addressing traffic needs, expanding Schoenherr Road will enhance accessibility in the township’s growing northeast quadrant.

The annual visioning exercise allows Shelby Township residents to actively participate in shaping their community. A resident survey was made available online from Sept. 25 to Oct. 16, providing an opportunity for locals to voice their opinions on the township’s direction.

In comparison to the 2023 top 10 priorities, it is clear that some issues persist while others evolved to address new challenges and opportunities. Blight enforcement and Schoenherr Road remained concerns. However, more emphasis on the Civic Center Development Plan, pedestrian and bike safety, and recreational opportunities at parks in 2024, demonstrates the township’s dedication to enhancing its overall quality of life.

“I want to thank our staff in the Planning and Zoning and the Community Relations departments for their dedication to the visioning process,” Township Supervisor Rick Stathakis said. “Additionally, I’d like to express gratitude to the more than 700 residents who participated in this process. Your opinions are invaluable as we make Shelby Township a better place to live, learn, play and do business.”

2024 Top 10 Priorities

<p>3 Prioritize Civic Center Development Plan</p>	<p>4 Improve pedestrian and bike safety at crosswalks</p>	<p>1 Continue to pursue sidewalk connectivity</p>	<p>2 Continue Blight Enforcement</p>
<p>7 Remove debris within Clinton River</p>	<p>8 Provide sidewalk connections, fill gaps to schools</p>	<p>5 Participate in local road improvements funding</p>	<p>6 Look for opportunities to expand recreation opportunities at parks</p>
<p>1 Continue to pursue sidewalk connectivity</p>	<p>2 Continue Blight Enforcement</p>	<p>9 Plan for long-term financial obligations</p>	<p>10 Widen Schoenherr Road between 25 Mile & 26 Mile roads</p>



Yard waste collection

GFL Environmental residential customers can recycle yard waste with their regular curbside collection until Dec. 15.

For 2023, yard waste collection ends Dec. 15. Yard waste consists of leaves, lawn cuttings, shrubs and tree trimmings. GFL Environmental residential customers should place yard waste into the designated brown containers, paper biodegradable bags or labeled containers up to 35 gallons in size.

GFL enforces a yard waste weight limit of 50 pounds. Brush and limbs less than 2 inches in diameter must be in bundles no longer than 4 feet and not exceeding a total of 18

inches in diameter or more than 50 pounds. Dirt, sod, large stumps, sand, gravel, concrete, rocks, animal feces and dead animals are not considered yard waste.

Yard waste containing plastic containers, potters, mulch bags or other plastic is considered contaminated and will be disposed of in regular trash. Please remove all plastic bags, ties and pieces from yard waste before placing on the curb.

Save the date for 2024 recycling events

Household Hazardous Waste Collection

Saturday, April 27, 2024

9 AM - 2 PM

River Bends Park
5700 22 Mile Road

Electronics Recycling Collection

Saturday, Oct. 12, 2024

9 AM - 1 PM

River Bends Park
5700 22 Mile Road

Visit shelbytwp.org/recycling for more information

Trash Tips for GFL Customers

Christmas tree pick-up begins Dec. 26. Residents should cut trees over 7 feet in half before placing them at the curb. There is no waste collection on Christmas and New Year's Day. Waste collection will be delayed one day those weeks.

- Yard waste begins the first week of April and ends the second week of December.
- Cardboard boxes need to be flattened and put in your recycling bin or bound and placed next to your container.
- Mattresses and box springs must be wrapped in plastic before you put them curbside.
- Large items can be placed curbside on your pickup day.
- Place all trash at the curb by 7 a.m. or the night before your pickup day.
- GFL Observed Holidays: New Year's Day, Memorial Day, Independence Day, Labor Day, Thanksgiving and Christmas Day.



GFL Environmental offers dedicated phone line for Shelby Township residential customers

GFL Environmental now offers a dedicated phone line for Shelby Township residential customers at **586-210-0754**. Residents can also get information at gflenv.com.

The township's Department of Public Works and Township Supervisor's Office manage township customer service with GFL Environmental. Report service issue with GFL Environmental at **586-210-0754**.

If you would like to contact the DPW, call **586-731-5990** or email dpw@shelbytwp.org. To contact the Supervisor's Office, call **586-731-5154** or email info@shelbytwp.org.

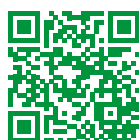
Connect to your township


It's easier than ever to connect with the township. From shelbytwp.org, you can find us on social media, subscribe for email and text alerts or take advantage of online tools for bill payment and other township business.




The township has email and text services to help you stay informed. Scan to get started.

Be the first to know about what's happening. Scan to read our township publications.





HELPFUL TIPS FOR WINTER ROADS



- ❄️ All township roads are under the jurisdiction of the Macomb County Department of Roads.
- ❄️ The MCDR must request assistance from Shelby Township before the township can assist with plowing.
- ❄️ Shelby Township may assist in clearing subdivision roads only - this does not include private streets, apartment complexes or condo communities.
- ❄️ The township does not salt when clearing subdivisions, therefore residents and motorists may still see snow after the township plows.
- ❄️ Even in heavy snowfall, the MCDR may choose not to contact the township to help clear roads. Circumstances like ice or heavy snowpack are better dealt with by the MCDR.
- ❄️ There are more than 30,000 homes lining residential streets and plows are unable to manually clear driveways or direct plowed snow away from driveways.
- ❄️ The MCDR will clear main roads before subdivisions. It may take a day or two after snowfall to clear all subdivisions.

The township forwards all calls for plow service to the MCDR. If you feel your home was missed, contact the MCDR directly at **586-463-8671** or visit roads.macombgov.org/roads-home-request.

SHELBY TOWNSHIP DDA PRESENTS

5

Shelby Township
Christmas Aglow



6:30 PM, NOVEMBER 30 - FREE EVENT

UTICA HIGH CHOIR | FREE SANTA PICTURES | DRONE SHOW | TREE LIGHTING
HOT CHOCOLATE & MARSHMALLOWS | REINDEER VISITS | WAGON RIDES

MUNICIPAL CAMPUS - 52700 VAN DYKE AVE.

SHELBYTWP.ORG/CHRISTMAS



VISIT SHELBY TOWNSHIP'S 40-FOOT CHRISTMAS TREE
NOV. 30-JAN. 3



**TOYS FOR TOTS COLLECTION
NOV. 27-DEC. 15**

THE SHELBY TOWNSHIP POLICE DEPARTMENT, SHELBY TOWNSHIP HALL AND THE SHELBY TOWNSHIP ACTIVITIES CENTER ARE COLLECTING NEW TOYS. YOU CAN DROP OFF YOUR GIFTS IN THE TOYS FOR TOTS COLLECTION BOXES 8:30 A.M.-5 P.M., MONDAY-FRIDAY, AT TOWNSHIP HALL AND THE ACTIVITIES CENTER, OR 24/7 AT THE POLICE DEPARTMENT. THE COLLECTION RUNS UNTIL DEC. 15 TO GIVE DESERVING CHILDREN A MERRY CHRISTMAS.



**CHRISTMAS LIGHTS CONTEST
DEC. 13 DEADLINE**

SHELBY TOWNSHIP IS LOOKING FOR THE BEST HOLIDAY LIGHTS. SEND UP TO FOUR PICTURES OF YOUR HOME IN FULL ILLUMINATION TO MADAMS@SHELBYTWP.ORG BY DEC. 13 TO ENTER. WE POST A MAP TO VIEW ENTRANTS ON SHELBYTWP.ORG/CHRISTMAS AND THE PRM FACEBOOK PAGE DEC. 15-20. WINNERS SELECTED BY TOWNSHIP STAFF APPEAR ON SHELBY TV'S "2023 CHRISTMAS LIGHTS SPECIAL." THE SPECIAL AIRS ON SHELBY TV, YOUTUBE.COM AND THE PRM FACEBOOK PAGE. ENTRIES MUST BE RESIDENTIAL HOMES. BUSINESSES ARE NOT ELIGIBLE.



**SHELBY TOWNSHIP HALL GIVING TREE
NOV. 27-DEC. 21**

THE SHELBY TOWNSHIP HALL GIVING TREE ALLOWS THE COMMUNITY TO SPREAD GOODWILL. RESIDENTS CAN FOLLOW THE LINK ON SHELBYTWP.ORG/CHRISTMAS TO THE GIVING TREE AMAZON WISHLIST TO PURCHASE ITEMS FOR THE SAMARITAN HOUSE FOOD PANTRY, WHICH OPERATES WITH 15 CHURCHES IN SHELBY TOWNSHIP AND OTHER COMMUNITIES. WISHLIST ITEMS ARE SHIPPED TO TOWNSHIP HALL AND ARE DELIVERED TO SAMARITAN HOUSE IN JANUARY. RESIDENTS CAN ALSO PURCHASE ITEMS AND PLACE THEM UNDER THE TOWNSHIP HALL CHRISTMAS TREE AT 52700 VAN DYKE AVE. THE COLLECTION RUNS THROUGH DEC. 21.

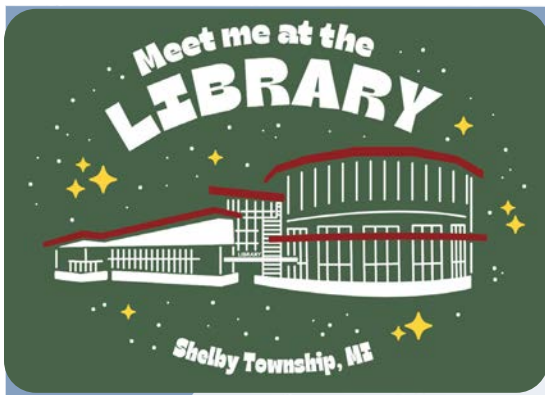
**SAMARITAN HOUSE
FOOD PANTRY
WISHLIST**

- SOUP
- COFFEE
- CRACKERS
- CONDIMENTS
- PASTA/RICE
- SALAD DRESSING
- TOMATO SAUCE
- CANNED BEANS
- TEA BAGS
- JELLY (PLASTIC JARS)
- CANNED TOMATO
- TISSUES
- TOILET PAPER
- DISH SOAP
- PAPER TOWEL
- LAUNDRY SOAP
- LIQUID HAND SOAP



**LETTERS TO SANTA
NOV. 27-DEC. 9**

VISIT THE LIBRARY STARTING NOV. 27 TO WRITE A LETTER TO SANTA AND PLACE IT IN THE SPECIAL MAILBOX BY DEC. 9. OUR ELVES MAKE SURE YOU HEAR BACK FROM SANTA BY MAIL. THIS PROGRAM IS A COOPERATIVE EFFORT WITH THE UTICA SHELBY TOWNSHIP KIWANIS, THE SHELBY GOLDEN K KIWANIS AND THE SHELBY TWP. LIBRARY.



**FRIENDS OF THE LIBRARY BOOKS BY THE BUNDLE SALE
NOV. 20-DEC. 21**

WHAT BETTER WAY TO CELEBRATE THE SEASON THAN TO GIVE THE GIFT OF READING. THE FRIENDS OF THE SHELBY TOWNSHIP LIBRARY IS OFFERING THEIR EVER-POPULAR ANNUAL BOOKS BY THE BUNDLE SALE STARTING NOV. 20 AND RUNNING THROUGH DEC. 21, OR WHILE SUPPLIES LAST. THEMED BOOK BUNDLES ARE BEAUTIFULLY WRAPPED IN RIBBON, BOWED AND READY FOR AFFORDABLE GIFT GIVING AT ONLY \$8 EACH. NEW BUNDLES ARE ADDED DAILY. HURRY IN BECAUSE THEY SELL OUT QUICKLY! ALL PROCEEDS FROM THE SALE OF BOOK BUNDLES DIRECTLY SUPPORT THE SHELBY TOWNSHIP LIBRARY.



CHRISTMAS @ THE SENIOR CENTER

FOR DETAILS ON THESE EVENTS OR ANY SHELBY TOWNSHIP SENIOR EVENTS OR PROGRAMS, CALL 586-739-7540, EMAIL SENIORS@SHELBYTWP.ORG OR VISIT SHELBYTWP.ORG/SENIORS



**BLITZEN'S BALL DINNER DANCE
5 PM DEC. 15**



**CHRISTMAS SING-A-LONG
11 AM DEC. 13**



**CHRISTMAS BREAKFAST BINGO
9:15 AM DEC. 11**



**JACK FROST JUBILEE LUNCHEON
11 AM DEC. 1**

THE SHELBY TOWNSHIP SENIOR CENTER HAS ACTIVITIES FOR ADULTS AGE 50 AND OLDER TO STAY MENTALLY, PHYSICALLY AND SOCIALLY HEALTHY. YOU MUST REGISTER AS A SENIOR CENTER MEMBER ANNUALLY TO PARTICIPATE. MEMBERSHIP IS \$5 FOR SHELBY TOWNSHIP AND UTICA RESIDENTS OR \$10 FOR NONRESIDENTS.



**CHRISTMAS BIRD COUNT
10 AM-2 PM
DEC. 16**

JOIN THE MACOMB COUNTY AUDUBON SOCIETY'S CHRISTMAS BIRD COUNT. ALL SKILL LEVELS ARE WELCOME. THE DAY INCLUDES INFO ON BIRD IDENTIFICATION AND WAYS TO ATTRACT AND OBSERVE WINTER BIRDS. GATHER DATA WHILE WATCHING THE FEEDERS BEHIND THE NATURE CENTER AND HIKE AROUND THE PARK TO OBSERVE VARIOUS WINTER BIRD SPECIES. THE CENTER HAS A LIMITED NUMBER OF BINOCULARS, SO PLEASE BRING YOURS IF YOU HAVE THEM. **FREE.**



**CHRISTMAS ON THE FRONTIER
1-5 PM - DEC. 2**

CELEBRATE WITH HISTORICALLY ACCURATE GAMES AND ACTIVITIES SUCH AS CANDLE-DIPPING AND CRAFTING ORNAMENTS. LEARN EARLY-EUROPEAN SETTLERS' CHRISTMAS TRADITIONS WITH REENACTORS IN OUR PIONEER CABIN. OBSERVE FAMILY TRADITIONS FROM THAT ERA. FATHER CHRISTMAS VISITS 2-4 P.M., AND CHILDREN CAN TELL HIM THEIR CHRISTMAS WISHES AND POSE FOR PHOTOS WITH A RUSTIC CABIN BACKDROP. THE "TOO HAPPY VOYAGEURS" PLAY LIVE MUSIC AND TEACH TRADITIONAL DANCES AT 1:30 P.M. AND 4:30 P.M. **\$5 RESIDENT, \$7 NONRESIDENT. INFANTS 2 AND UNDER ARE FREE.**



**WINTER SOLSTICE HIKE & BONFIRE
6:30-8:30 PM
DEC. 21**

CELEBRATE THE LONGEST AND DARKEST NIGHT OF THE YEAR. WE CRAFT PRESSED FLOWER LANTERNS, FOLLOWED WITH A LUMINARY LIT NIGHT HIKE. THEN WE WILL WARM OURSELVES BY THE FIRE WITH HOT CHOCOLATE AND EXPLORE SOLSTICE LORE AND TRADITIONS FROM AROUND THE WORLD. AGES 12 AND OLDER. RECOMMENDED AGES 12 AND OLDER. **REQUIRED TICKETS ARE \$3 FOR SHELBY TOWNSHIP AND UTICA RESIDENTS AND \$5 FOR NONRESIDENTS.**



**BREAKFAST WITH SANTA
10 AM DEC. 9 @ ACTIVITIES CENTER**

EVENT INCLUDES A DELICIOUS BREAKFAST, A SMALL GIFT FROM SANTA AND A HOLIDAY CRAFT. HIGH CHAIRS AND BOOSTER SEATS ARE UNAVAILABLE, AND WE DO NOT SELL TICKETS AT THE DOOR. CALL 586-731-0300 FOR TICKETS.



**DINNER & DANCING WITH SANTA
6 PM - DEC. 14 @ CHERRY CREEK**

DOORS OPEN FOR THIS FAMILY EVENT AT 6 P.M. DINNER IS SERVED AT 6:30 P.M. AFTER DINNER, DANCE TO FESTIVE MUSIC AND VISIT WITH SANTA UNTIL 8:30 P.M. CHILDREN RECEIVE A DELIGHTFUL GIFT, SO DON'T FORGET YOUR CAMERA. SEATING IS OPEN, SO ARRIVE AT 5:45 P.M. IF YOUR FAMILY IS LARGER THAN SIX PEOPLE. NO TICKET SALES AT THE DOOR. REFUNDS ARE UNAVAILABLE AFTER NOV. 25. A \$7 PROCESSING FEE APPLIES TO ALL REFUNDS.



WINTER HOLIDAY SAFETY

Winter holidays are a time for families and friends to get together. But that also means a greater risk for fire. Following a few simple tips will ensure a happy and fire-safe holiday season.

HOLIDAY DECORATING

- BE CAREFUL WITH HOLIDAY DECORATIONS. CHOOSE ONES THAT ARE FLAME RESISTANT OR FLAME RETARDANT.
- KEEP LIT CANDLES AWAY FROM DECORATIONS AND OTHER THINGS THAT CAN BURN.
- SOME LIGHTS ARE ONLY FOR INDOOR OR OUTDOOR USE, BUT NOT BOTH.
- REPLACE ANY STRING OF LIGHTS WITH WORN OR BROKEN CORDS OR LOOSE BULB CONNECTIONS. READ MANUFACTURER'S INSTRUCTIONS FOR NUMBER OF LIGHT STRANDS TO CONNECT.
- USE CLIPS, NOT NAILS, TO HANG LIGHTS SO THE CORDS DO NOT GET DAMAGED.
- KEEP DECORATIONS AWAY FROM WINDOWS AND DOORS.



HOLIDAY ENTERTAINING

- TEST YOUR SMOKE ALARMS AND TELL GUESTS ABOUT YOUR HOME FIRE ESCAPE PLAN.
- KEEP CHILDREN AND PETS AWAY FROM LIT CANDLES.
- KEEP MATCHES AND LIGHTERS UP HIGH IN A LOCKED CABINET.
- STAY IN THE KITCHEN WHEN COOKING ON THE STOVETOP.
- ASK SMOKERS TO SMOKE OUTSIDE. REMIND SMOKERS TO KEEP THEIR SMOKING MATERIALS WITH THEM SO YOUNG CHILDREN DO NOT TOUCH THEM.
- PROVIDE LARGE, DEEP ASHTRAYS FOR SMOKERS. WET CIGARETTE BUTTS WITH WATER BEFORE DISCARDING.

FACTS

- TWO OF EVERY FIVE HOME DECORATION FIRES ARE STARTED BY CANDLES.
- NEARLY HALF OF DECORATION FIRES HAPPEN BECAUSE DECORATIONS ARE PLACED TOO CLOSE TO A HEAT SOURCE.

CHRISTMAS TREE SAFETY

PICKING THE TREE:

- CHOOSE A TREE WITH FRESH, GREEN NEEDLES THAT DO NOT FALL OFF WHEN TOUCHED.

PLACING THE TREE:

- BEFORE PLACING THE TREE IN THE STAND, CUT 2" FROM THE BASE OF THE TRUNK.
- MAKE SURE THE TREE IS AT LEAST THREE FEET AWAY FROM ANY HEAT SOURCE, LIKE FIREPLACES, RADIATORS, CANDLES, HEAT VENTS OR LIGHTS.
- MAKE SURE THE TREE IS NOT BLOCKING AN EXIT.
- ADD WATER TO THE TREE STAND. BE SURE TO ADD WATER DAILY.

LIGHTING THE TREE:

- USE LIGHTS THAT HAVE THE LABEL OF A RECOGNIZED TESTING LABORATORY. SOME LIGHTS ARE ONLY FOR INDOOR OR OUTDOOR USE.
- REPLACE ANY STRING OF LIGHTS WITH WORN OR BROKEN CORDS OR LOOSE BULB CONNECTIONS. READ MANUFACTURER'S INSTRUCTIONS FOR NUMBER OF LIGHT STRANDS TO CONNECT.
- NEVER USE LIT CANDLES TO DECORATE THE TREE.
- ALWAYS TURN OFF CHRISTMAS TREE LIGHTS BEFORE LEAVING HOME OR GOING TO BED.

BEFORE HEADING OUT OR TO BED

- BLOW OUT LIT CANDLES WHEN YOU LEAVE THE ROOM OR GO TO BED.
- TURN OFF ALL LIGHT STRINGS AND DECORATIONS BEFORE LEAVING HOME OR GOING TO BED.

Floodplain Information

FLOOD HAZARD AREAS — Portions of Shelby Township are encumbered by the 100-year floodplain. The areas most susceptible to flooding are along the main and middle branch of the Clinton River. Smaller floodplain areas exist proximate to the Harris, Longstaff, Decker, Dunn and Bannister Drains. Of course, any drain, stream, river or other body of water in the township poses a flooding risk.

Find out if your property is in the regulated 100-year floodplain and additional information on floodway, Historical Flooding and Wetland by calling the Shelby Township Floodplain Management Office at 586-731-5969 or by visiting the Building Department. The township keeps records of elevation certificates for public view. Maps can also be reviewed online at fema.gov or by visiting the Building Department.

FLOOD SAFETY — Here are some things you can do to protect your family and property from flooding.

- **Contact your property insurance agent to see if a flood insurance policy would help you.** Even if you're not in the mapped floodplain, you may be subject to flooding from local drainage. In either case, flood insurance can be a good investment because most homeowner insurance policies do not cover damage caused by surface water flooding.
- **Do not walk or drive through flood water.** Currents are deceptive; just six inches of moving water can knock you off your feet. Do not drive around barriers, as the road or bridge may be washed out.
- **Stay away from power lines and electrical wires.** If your house is about to be flooded, turn off the power at the service box. Electrical current can travel through water. Electrocutation is the second leading cause of death during floods.
- **Be alert to gas leaks.** Turn off the gas to your house before it floods. If you smell gas, report it to a township official or your gas company. Do not use candles, lanterns or open flames if you smell gas or are unsure if your gas has been shut off.
- **Keep children away from the flood waters, ditches, culverts and storm drains.** Flood waters can carry unknown items that have dislodged themselves. Culverts may suck smaller people into them rendering them helpless.
- **Clean everything that has been wet.** Flood water will be contaminated with sewage and other chemicals which pose severe health threats.
- **Look out for animals, especially snakes.** Small animals that have been flooded out of their home may seek shelter in yours.
- **Do not use gas engines, such as generators, or charcoal fires indoors during power outages.** Carbon-monoxide exhaust can pose serious health hazards.

PROPERTY PROTECTION MEASURES — Talk to us about protecting your house or business.

There are ways to modify your building to minimize flood damage. Where flooding is shallow, measures such as small flood-walls, regarding the yard, and flood-proofing the walls or utilities can be relatively inexpensive. Where flooding is deep, a building may need to be elevated.

Check with the Shelby Township Building Department before you build, alter, regrade or fill on your property. Call 586-731-5969 first. A permit may be needed to ensure that a project is compliant with all regulations. These regulations are designed to protect your property from flood damage and to make sure you do not cause a water problem for your neighbors.

FLOODPLAIN PERMIT REQUIREMENTS — All development within the 100-year floodplain (including construction of buildings, filling, excavation, fences, etc.) is required to obtain a permit from the Shelby Township Building Department. Other state and local permits may be applicable too. Applications must be made prior to doing any work in a floodplain area. Please contact the Building Department to receive all the information you will need in order to properly develop in the floodplain at 586-731-5969. You may report any unlawful development activities to the above number as well.

SUBSTANTIAL IMPROVEMENT/DAMAGE — For buildings within regulated floodplains, the National Flood Insurance Program requires that, if the cost of improvements to a building or the cost to repair damages (from any cause) exceeds 50 percent of the market value of the building (excluding land value), the entire building must be brought up to current floodplain management standards. Building improvement projects include exterior and interior remodeling, rehabilitation, additions, and repair and reconstruction projects. Please contact the Shelby Township Building Department at

586-731-5969 for details.

FLOOD INSURANCE — If you do not have flood insurance, talk to your insurance agent. Most homeowner's insurance policies do not cover damage from floods. Flood insurance is only available to participating communities in the National Flood Insurance Program (NFIP), such as Shelby Township. Our commitment to floodplain management helps to minimize flood hazards and enables us to be a part of the NFIP. Additionally, because Shelby Township participates in the Federal Emergency Management Agency's Community Rating System program, flood insurance premiums are discounted.

Be sure to check your policy to ensure you have adequate coverage. Usually these policies cover the building structure, but not the contents. Contents coverage can also be obtained by asking. There is a 30-day waiting period before flood insurance coverage becomes effective. Plan ahead; do not wait until a flood is predicted before purchasing flood insurance.

If you are building within a floodplain, the purchase of flood insurance is mandatory if using a federally regulated/insured bank for a loan.

NATURAL & BENEFICIAL FUNCTIONS — Don't pour oil, grease, pesticides, or other pollutants down storm drains or into the ditches and streams. Our streams and wetlands help moderate flooding and are habitat for fish, frogs, and other species that provide us with recreation or food. Let's protect them and their homes. Floodplains play a valuable role in providing natural and beneficial functions to the area around, and including, Shelby Township. Floodplains that are relatively undisturbed provide a wide range of benefits to both human and natural systems. These benefits provide aesthetic pleasure as well as function to provide

active processes such as filtering nutrients. Significant areas in Shelby Township's River Bends and Holland Ponds parks are located within the floodplain associated with the Clinton River. Both enhance waterfowl, fish and other wildlife habitats and provide feeding/breeding grounds. Lastly, such floodplain areas provide natural erosion control and open space so further flooding damage does not occur.

DRAINAGE SYSTEM MAINTENANCE — As simple as it may sound, keeping smaller ditches and streams free of debris dramatically improves run-off capacity in low-lying areas and greatly reduces the occurrence blockage that significantly contributes to flooding. It is illegal to dump materials into a required waterway and violators may be fined. If you see someone in the act of dumping in one of our watercourses, please report it to the Shelby Township Building Department at 586-731-5969 or the Macomb County Public Works Offices at 586-469-5327.

- ADDITIONAL INFORMATION** — If you have flooding or draining concerns call the Shelby Township Building Department at 586-731-5969 for on-site assistance. If you should require further or more detailed information regarding flood-related issues in Shelby Township contact:
- **Federal Emergency Management Agency**
15801 Michigan Ave.,
Dearborn MI, 48126
Phone: 800-621-3362
Web: fema.gov
 - **Shelby Township Building Dept.**
52700 Van Dyke Ave.,
Shelby Township MI, 48316
Phone: 586-731-5969
Email: building@shelbytwp.org
Web: shelbytwp.org/building
 - **Shelby Township Library**
52160 Van Dyke Ave.,
Shelby Township 48316
Phone: 586-739-7414
Email: shelbylib@libcoop.net
Web: shelbytwp.org/library

Shelby Township DPW
Water Quality Report

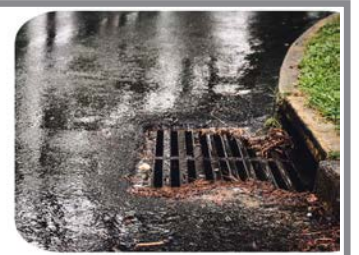
The Pipeline

Available at
shelbytwp.org/waterqualityreport

To have a copy mailed to you, contact Shelby Twp. DPW at 586-731-5990 or email dpw@shelbytwp.org



In Compliance of the Federal Water Pollution Control Act, Shelby Township maintains a NPDES MS4 permit. For more information on the township's Storm Water Management Plan or to comment on the Township's NPDES MS4 permit, visit shelbytwp.org/dpw.





SHELBY TOWNSHIP LIBRARY

Shelby Township Library

52610 Van Dyke Ave.

586-739-7414

shelbylib@libcoop.net

shelbytwp.org/library

OPEN: 9 AM-8 PM, M-Th
9 AM-5 PM, F-Sa

CLOSED: Sunday

The Library will be closed:

- Nov. 10-11 for Veterans Day
- Nov. 22 closes at 5 PM for Thanksgiving
- Nov. 23-24 for Thanksgiving
- Dec. 22-Dec. 26 for Christmas
- Dec. 27-Dec. 29 holiday hours 9 AM-3 PM
- Dec. 30-Jan. 1 for New Year's Day
- Feb. 19 for Presidents Day

PICK MY BOOKS

Fill out a form telling us what you are in the mood to read and what you are not interested in, and we will find you three items to enjoy. Within three days, we will have the books on hold and ready for pick-up. Click the "Pick My Books" button on shelbytwp.org/library to start your next literary adventure.

FRIENDS OF THE LIBRARY

Friends of the Library Monthly Meeting 10 AM, Th 11/16, 1/18, 2/15

The Friends of the Library is an independent, nonprofit support organization with elected officials. The Friends of the Library support the library with funds and volunteer services not provided for by library procedures.

The Friends of the Shelby Township Library sponsor activities for fundraising and membership enhancement and raise funds by assessing membership dues, holding fundraisers and selling items in the Friends' Bookstore. These funds provide furniture, equipment, events, programs, artwork and materials. Library programs on these pages are funded by the Friends of the Shelby Township Library. You can support the Friends and the library by shopping at the library's Friends' Corner Bookstore.

READING CHALLENGES & RESOURCES

TALK Text and Learn for Kindergarten

Text "TALK" to 75547 to receive messages with fun activities to prepare your little one for school success. Thanks to the Institute of Museum and Library Services, this program is free. Please note that your phone plan's standard messaging rates will apply.

Mission: Read

In grades K-3, accumulate 1,000 days of reading by 6th grade. Each day, ask, "Have I read something today?" If "Yes," it counts toward the 1,000-day goal. Track progress at shelbytwplib.beanstack.org or the free Beanstack app. Achieve milestones and earn rewards on this literary mission.

1,000 Books Before Kindergarten

Read 1,000 books to your little ones before they start kindergarten. Track your progress at shelbytwplib.beanstack.org or using the free Beanstack app. Each book counts, every time you read it.

100 Books Before Graduation

Teens in grades 7-12, read 100 books before graduating high school. Track your progress at shelbytwplib.beanstack.org or using the free Beanstack app. Reach milestones, collect virtual badges, and get a complimentary book and treats upon completion.

STORYTIMES, CLUBS & GROUPS

Preschool Pages (Ages 3-5)

10-10:30 AM, T
11/14, 11/28, 12/5, 12/12, 12/19,
1/9, 1/16, 1/23, 1/30, 2/6, 2/13
Program Room

Toddler Tales (Ages 2-3.5)

10-10:30 AM & 11-11:30 AM, W
11/8, 11/15, 11/29, 12/6, 12/13,
12/20, 1/10, 1/17, 1/24, 1/31, 2/7, 2/14
Program Room

Baby Bears Storytime (Ages 2 & Under)

10 AM, F
11/17, 12/8, 1/5, 1/19, 2/2, 2/16
Program Room

Families & Jammies (All Ages)

6:30-7 PM, Th
11/9, 12/21, 1/11, 2/8
Program Room

Afterschool Teen Hangout (Ages 12+)

3-4:30 PM, W meets weekly
no meeting 11/22, 12/27, 2/21
Program Room

Homeschool Meet-up (Grades 1-6)

1:30-2:30 PM, Th
11/30, 1/25, 2/22
Program Room

Teen Advisory Board (Grades 7-12)

6 PM, Th
12/14, 1/4, 2/1
Legacy Room

Teen Book Club (Grades 7-12)

3-4:30 PM, Sa
11/18, 12/9, 1/20, 2/17
Program Room

Not Your Parents' Book Club 7 PM, T 11/28, 1/30, 2/27

Meets at Steakhouse 22
48900 Van Dyke Ave.

Mystery Book Club 10:30 AM, Sa

11/18, 12/9, 1/13, 2/10
Meeting Room

Evening Book Club

6:30 PM, T 11/14, 12/12, 1/9, 2/13
Meeting Room

Afternoon Book Club

1 PM, Th 11/16, 12/12, 1/18, 2/15
Meeting Room

Writers Group

6:30 PM, Th 11/9, 11/16, 12/7,
12/14, 1/4, 1/11, 1/18, 1/25, 2/1,
2/8, 2/15, 2/22, 2/29
Meeting Room

PAWS TO READ (GRADES K AND UP)

9:30-11:30 AM Sa 11/4, 12/2, 1/27, 2/24

Children and their caregivers can check in at the children's desk to read to a certified therapy dog. Bring a book from home, or choose one from the library.

Trolls Movie Party (All Ages)

1:30-3 PM Sa 1/13
Join us for a screening of the movie 'Trolls' (PG) on the library's large screen, where you can also have fun with troll-inspired arts and crafts. Feel free to come dressed in your favorite costumes.
Legacy Room

Pokemon Hangout (All Ages)

1:30-2:30 PM Sa 2/3
Bring cards and games to play, trade and meet other Pokemon fans at this casual event. Enjoy themed crafts and activities. Door prizes are sponsored by Paladin Cards. Legacy Room

Valentine Cards & Crafts (All Ages)

1:30-2:30 PM Sat 2/10
Decorate a card for residents of a local assisted living facility, then make a creation to take home.
Legacy Room

Library I Spy (All Ages)

All day 2/20-2/24
Put your knowledge of the library building to the test! Search for concealed words that spell out a secret message by identifying details throughout the library. To get your I Spy game sheet, simply ask a librarian at the children's desk.
Children's Area

Kids Word Bingo (Grades PreK-5)

10-11 AM T 2/20
Children and their caregivers can have a great time playing the traditional game of Bingo while enhancing their vocabulary through words.
Legacy Room

TEEN PROGRAMS

Tween Paper Bag Star Craft (Ages 8-12)

6:30-7:30 PM Th 1/18
Get creative by embellishing brown paper bags and turning them into your very own DIY paper stars. Registration opens on Jan. 4.
Program Room

Teen Night: Paint and Chill (Grades 7 - 12)

6-7:30 PM F 1/26
Create your own masterpiece at this stress-free painting session while listening to relaxing lo-fi music. Dress for a mess. Registration opens Jan. 12.
Program Room

Tween Minecraft Diamond Painting (Ages 8-12)

6:30-7:30 PM Th 2/15
Craft your own Minecraft-inspired work of art using diamond painting, a blend of cross-stitch and paint-by-numbers techniques. We supply all the necessary materials. Registration opens Feb. 1.
Legacy Room

Library programs on these pages are funded by the Friends of the Shelby Township Library. You can support the Friends and the library by shopping at the library's Friends' Corner Bookstore.

Registration required. Register online at shelbytwp.org/library or call 586-739-7414.

ADULT PROGRAMS

Talk and Textile

7 PM T 1/9, 1/23, 2/13, 2/27
Drop in and work on your knitting, sewing, or other fiber project, alongside fellow craft enthusiasts. We welcome participants of all skill levels. While it's not a formal class, experienced fiber artists may be available to assist beginners. Please bring your own supplies.
Meeting Room

Sensory Movies at the Library

12:30 PM F 1/12, 2/9, 2/23
The Legacy Room is set to feature well-loved, PG-rated films with illuminated surroundings, lowered volume, and subtitles on the cinema's big screen. Everyone is invited to savor the film in their preferred style, whether it's standing, sitting, or strolling around. Please be mindful that certain films may include visually intense scenes even with the lights on, so take the necessary precautions. Legacy Room

- Jan. 12-"Ruby Gillman, Teenage Kraken"
- Feb. 9-"Teenage Mutant Ninja Turtles: Mutant Mayhem"
- Feb. 23-"The Super Mario Bros. Movie"

Exploring Isle Royale National Park

7 PM W 1/24
Discover the beauty and rich history of Isle Royale, nestled in the breathtaking Lake Superior. Harry Champion will enlighten us with his photos, captivating stories and insights gained from over 30 years of exploring this pristine and remote wilderness. Meeting Room

Jigsaw Puzzle Competition

1:30-3 PM Sa 1/27
Bring a team or come alone to enjoy jigsaw puzzles for fun and prizes. No registration required. Legacy Room

Designing with Native Plants

7 PM W 1/31
We invite you to join us for an informative session on integrating native plants into your garden. Whether you're a newcomer to native plant gardening or have some experience, you'll find value in exploring design concepts to help craft a garden that aligns with your preferences and offers ecological benefits. Our guest speaker is Master Gardener Jean Perseley.
Meeting Room

Discovering the Belted Kingfisher

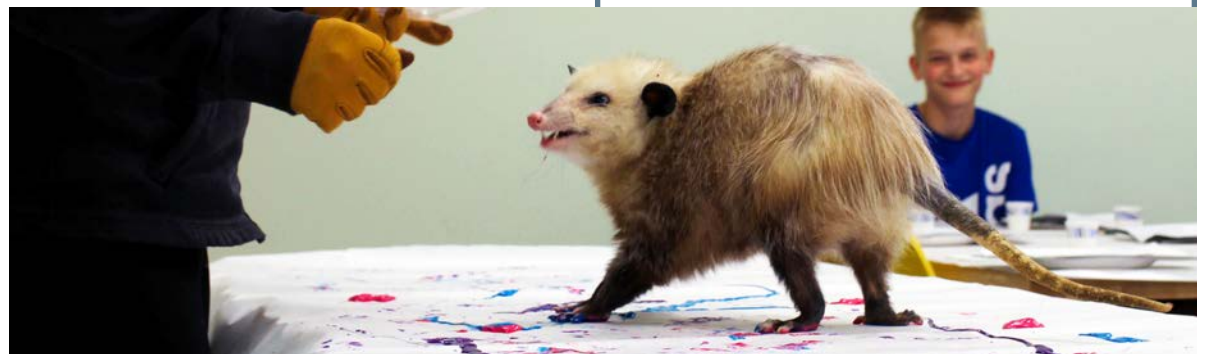
7-8 PM W 2/21
Renowned nature photographer Bob Weir returns to the library to present his latest collection of nature photographs featuring the Belted Kingfisher. Explore the world of this captivating bird and discover the secrets to capturing stunning nature images. Legacy Room

Medicare 101 - 2024 Educational Seminar

1:30 PM Sa 2/24
Do you have inquiries regarding Medicare? Join us for this information-focused seminar, conducted by licensed Medicare advisors. Gain insights into the basics of Medicare, the coverage provided by Parts A and B, eligibility criteria, enrollment periods, and strategies for penalty avoidance. We'll also provide an overview of supplementary coverage options, including Medicare Supplements, Part C Medicare Advantage and Part D Prescription Drug Plans.
Meeting Room

Painting with an Opossum

7 PM W 2/28
Come meet Lily, the resident opossum at the Burgess-Shadbush Nature Center, who will craft unique works of art to share. Afterward, explore the creative process and paint Lily's portrait with artist Sheri Gulla. Registration opens Feb. 10.
Legacy Room



TECH SUPPORT & TECH TALK

Tech Support

9:30-11 AM M 1/15, 1/29, 2/12, 2/26
Our tech librarian is here to assist with your inquiries during this period. This program operates on a first-come, first-served basis. Feel free to bring your devices and questions, and we'll collaborate to find solutions. Common topics include configuring digital services, device maintenance and Microsoft Office assistance. Proctor Room

Tech Talk

1 PM T 1/16, 1/23, 1/30, 2/6, 2/13, 2/20, 2/27
These classes are perfect for beginners and those wanting to learn a little more. Technology Lab

- Jan. 16-Using Library Resources: Libby and Hoopla
- Jan. 23-Introduction to Smartphones
- Jan. 30-Introduction to Smartphones
- Feb. 6-Falling in Love With Online Dating
- Feb. 13-I'd Rather Be Single Than Scammed (Cyber Scams to Look Out For)
- Feb. 20-Text Messaging, Facebook and Technology Etiquette
- Feb. 27-iPad Question and Answer

HOLIDAY HOURS

Township municipal offices and the Department of Public Works, will be closed from Dec. 22, 2023 through Jan. 1, 2024.

Emergency services are available by calling 911.
For all non-emergencies, call 586-731-2121.



The Shelby Township Library has special hours during the Christmas and New Year's Day holidays:

- Dec. 22 - CLOSED
- Dec. 23 - CLOSED
- Dec. 24 - CLOSED
- Dec. 25 - CLOSED
- Dec. 26 - CLOSED
- Dec. 27 - 9 AM - 3 PM
- Dec. 28 - 9 AM - 3 PM
- Dec. 29 - 9 AM - 3 PM
- Dec. 30 - CLOSED
- Dec. 31 - CLOSED
- Jan. 1 - CLOSED
- Jan. 2 - 9 AM - 8 PM



Charter Township of Shelby
**BURGESS - SHADBUSH
NATURE CENTER**
586-323-2478 naturecenter@shelbytp.org

The Burgess-Shadbush Nature Center has special hours during the Christmas and New Year's Day holidays:

- Dec. 22 - 10 AM - 6 PM
- Dec. 23 - 10 AM - 6 PM
- Dec. 24 - CLOSED
- Dec. 25 - CLOSED
- Dec. 26 - CLOSED
- Dec. 27 - 10 AM - 6 PM
- Dec. 28 - 10 AM - 6 PM
- Dec. 29 - 10 AM - 6 PM
- Dec. 30 - 10 AM - 6 PM
- Dec. 31 - CLOSED
- Jan. 1 - CLOSED
- Jan. 2 - CLOSED
- Jan. 3 - 10 AM - 6 PM



Parks • Recreation • Seniors

The Shelby Township Activities Center and Senior Center will be open for limited programming over the holiday break. Please call 586-731-0300 for hours of operation.

Assessing
586-731-5910
assessing@shelbytp.org

Building Department
586-731-5969
building@shelbytp.org

Clerk's Office
586-731-5102
clerk@shelbytp.org

Code Enforcement
586-726-7248
ordenf@shelbytp.org

Community Relations
586-254-7130
info@shelbytp.org

41A District Court
586-739-7325
shelbytp.org/court

Fire Department
586-731-3476
Emergencies dial 911

Human Resources
586-726-7241
HR@shelbytp.org

Library
586-739-7414
shelbylib@libcoop.net

Parks, Recreation and Maintenance
586-731-0300
shelbyprm@shelbytp.org

Planning Department
586-726-7243
planning@shelbytp.org

Police Department
586-731-2121
Emergencies dial 911

Public Works
586-731-5990
dpw@shelbytp.org

Supervisor's Office
586-731-5154
rsthatakis@shelbytp.org

Treasurer's Office
586-731-5145
treasurer@shelbytp.org

