



Special Report



Shelby Township Fire expands footprint, increases services, maintains lowest tax rate

Shelby Township Board, Fire address demands of changing community with two new stations and special services without tax increase.



Macomb County's
Lowest-cost, full-service
Community

NEW FIRE STATIONS IN NORTHEAST AND SOUTHEAST QUADRANTS DECREASE RESPONSE TIMES, SAVE LIVES.

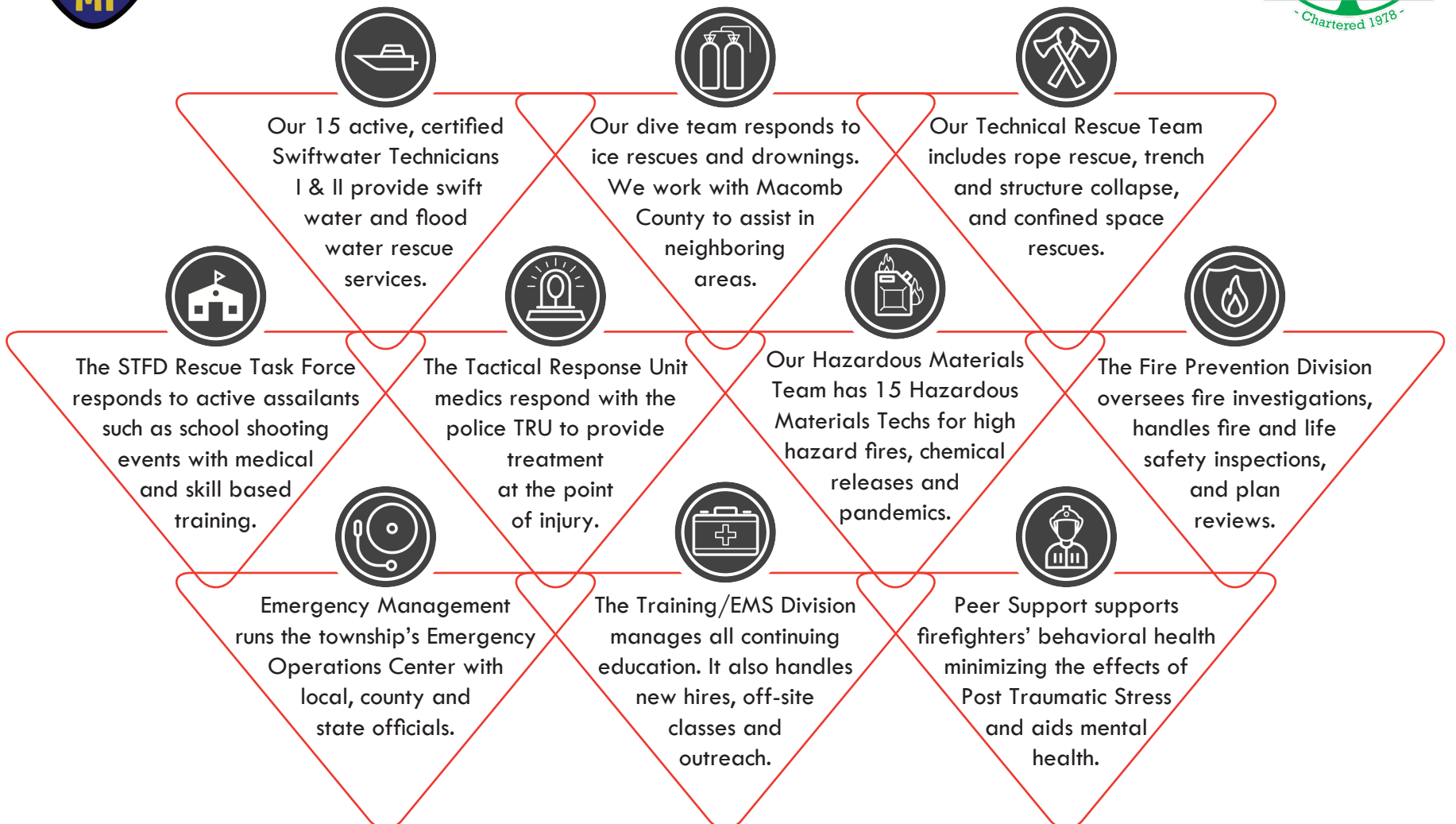
PAID IN CASH - NO DEBT- NO BONDING - NO TAX INCREASE



In 2018 and 2019, the Shelby Township Fire Department built, opened, equipped and staffed two new fire stations - paid in cash with no debt, no bonding and no increase in taxes.



WHILE OPERATING WITHIN THE LOWEST TAX RATE AMONG FULL-SERVICE MACOMB COUNTY COMMUNITIES, THE SHELBY TOWNSHIP FIRE DEPARTMENT IS A LEADER IN THE STATE OF MICHIGAN WITH NUMEROUS SPECIALTY TEAMS.





Fire Chief Frank Pierce
Shelby Township Fire Department
 6345 23 Mile Road
 Shelby Township, MI 48316
www.shelbytpw.org/fire
 Phone: 586-731-3476

Re: Shelby Township Fire Department - A Full Service Fire Department

Dear Residents and Community Members,

Shelby Township Fire operates as a full-service department, adopting an all-hazards approach defined by the Centers for Medicare and Medicaid Services. This approach integrates emergency preparedness planning for a range of scenarios. Our primary responsibilities include fire protection, prevention and Emergency Medical Services. All of our professional firefighters are trained to Firefighter I & II standards and hazardous materials operations. Seventy-six firefighters are certified as paramedics, with eight EMTs attending or waiting to attend paramedic classes.

Equipped with eight Advanced Life Support Ambulances, each of our five stations has at least one ALS unit dedicated to immediate response and transport. There's no waiting time, as all ambulances are solely committed to Shelby Township. Stations also house advanced life support or basic life support engines for fire suppression, and two have ladder trucks for elevated rescue and fire suppression. Specialized vehicles, including an off-road Gator for bike paths and trails, support our mission throughout the township.

Our department boasts specialty teams, such as a dive and swift water rescue for water incidents. A Rescue Task Force Team collaborates with law enforcement in intense situations. We developed a Tactical Response Unit with the police department to support servicing arrest warrants. Specialized training covers technical rescue scenarios like building collapse, rope rescue, machine rescue, trench collapse, confined space rescue and hazardous materials incidents. We have our own dispatch center and communication technicians, providing crucial information and lifesaving instructions until crews arrive on the scene.

Unique to our department is total local control, allowing us to set our destiny. Committed firefighters, dedicated solely to firefighting, undergo diverse training to ensure community safety.

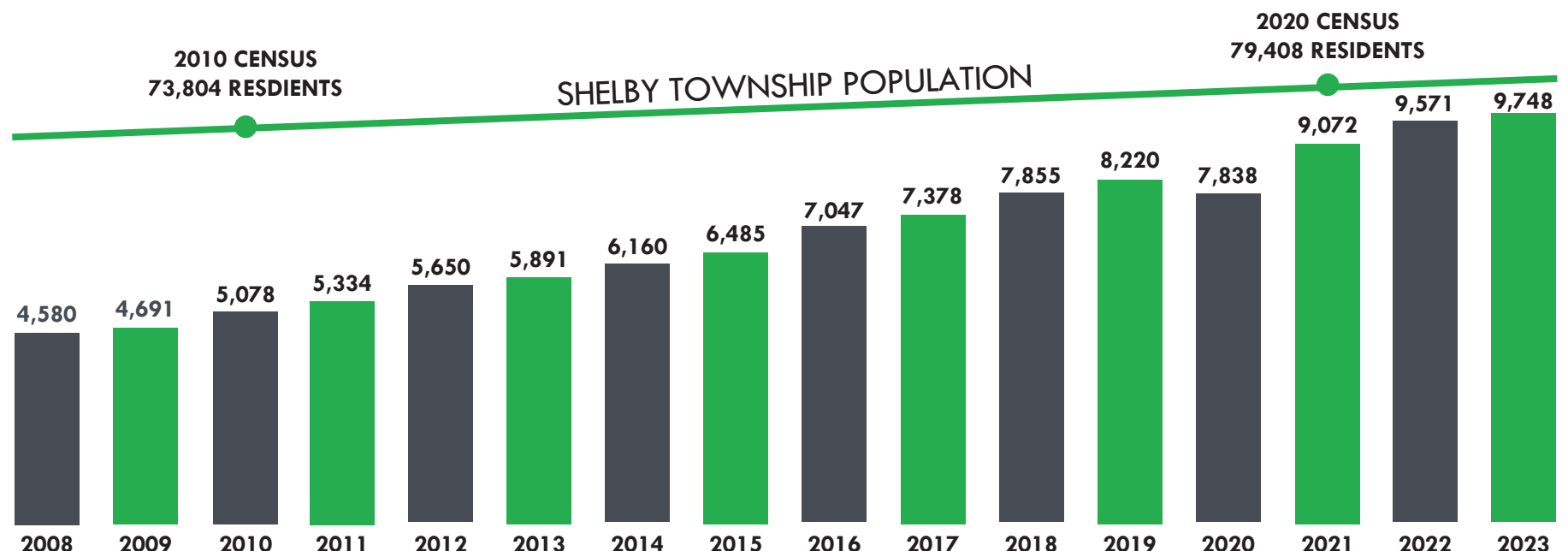
With five stations strategically located, we maintain a remarkable dispatch-to-on-scene time average of 4.96 minutes. Being staffed 24/7 enables us to respond immediately to emergencies without waiting for personnel to arrive from home, ensuring quick implementation of firefighting tactics or patient treatment.

Unlike volunteer or split full-time/part-time departments, our professional firefighters do not leave another job to respond to a call, and they do not decide that they are not going to respond in the middle of the night because they have other obligations the next morning. This is their craft, and they are very proud of what they do every day they come to work.

Sincerely,
 Fire Chief Frank Pierce
 Shelby Township Fire Department

Rick Stathakis Supervisor	Stanley T. Grot Clerk	James Carabelli Treasurer	Lisa Casali Trustee	Lucia Di Cicco Trustee	John Vermeulen Trustee	Vince Viviano Trustee
------------------------------	--------------------------	------------------------------	------------------------	---------------------------	---------------------------	--------------------------

DESPITE A SIGNIFICANT INCREASE IN ANNUAL CALLS FOR SERVICE, POPULATION GROWTH AND THE ADDITION OF TWO NEW FIRE STATIONS IN 2018 AND 2019, THE SHELBY TOWNSHIP FIRE DEPARTMENT CONTINUES TO OPERATE WITH THE SAME MILLAGE RATE AS IN 2008.



Shelby Township Fire Department calls for service per year



Shelby Township Community Connect

Together, Building a Safer Community Through Prevention, Preparedness & Response



communityconnect.io/info/mi-shelbytownship

CREATE OR UPDATE YOUR PROFILE TODAY

1 Create an account

Sign in for free and get started doing your part. It just takes your email, phone number and address.

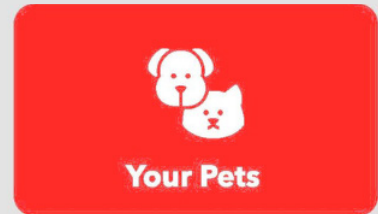
2 Enter the info that matters most

Enter valuable information that can help us assist more effectively during an emergency.

3 Help your Fire Department when seconds count

That's it. Just keep us updated when things change overtime so we can always be prepared.

WHAT KINDS OF INFORMATION CAN I PROVIDE?



Shelby Township Fire Department expands Community Risk Reduction program

In a move to enhance community safety, the Shelby Township Fire Department launched its Community Risk Reduction program.

Aimed at minimizing all-hazards risks within the community, the initiative leverages the department's intimate knowledge of local needs gained through daily interactions during medical calls, inspections and community patrols.

"The Shelby Township Fire Department's professional firefighters see firsthand, whether through medical calls, inspections

or simply driving through the community, how our neighbors live and the needs they have," Fire Chief Frank Pierce said. "The CRR team uses this knowledge and our expert training to make the township the safest possible place."

The STFD CRR team, composed of highly trained professionals, encompasses various key responsibilities, including targeted outreach programs for apartment and mobile home communities, focusing on fire awareness and severe weather preparedness.

Collaboration with industrial and commercial business partners is a crucial aspect of the program, with a focus on enforcing codes and creating safe working environments.

The CRR aims to strengthen ties with religious institutions, schools and scout troops to enhance professional relationships. Embracing technology like Shelby Township Community Connect and social media, the CRR seeks to expand public engagement.

Additionally, the STFD promotes participation in the fire extinguisher program and training, increasing

visibility through attendance at local events and fostering connections between professional firefighters and the public.

Regular activities, such as radio checks, siren monitoring and participation in local emergency management meetings, underscore the department's commitment to staying ahead of potential threats and hazards.

The STFD's Community Risk Reduction program is a testament to the department's dedication to the well-being of Shelby Township.



"Shelby Township Fire Department Special Report" is published by the Shelby Township Community Relations Department

Charter Township of Shelby, Macomb County, MI

PHONE 586-254-7130 - info@shelbytwp.org - shelbytwp.org